

## Quick Links:

- [Policy Update](#)
- [Assessment Update](#)
- [Test Development](#)

## Formative Assessments

- [DRC BEACON](#)
- [Formative Instructional Practices \(FIP\)](#)
- [GKIDS 2.0 and GKIDS Readiness Check](#)
- [Keenville](#)

## Summative Assessments

- [ACCESS for ELLs](#)
- [Georgia Alternate Assessment 2.0](#)
- [Georgia Milestones](#)
- [NAEP/NCES](#)

## Accountability

- [Accountability Update](#)

## GaDOE Professional Learning Events

[October-December 2022](#)

## External Links

[For Educators](#)

[Online Georgia Assessment and Training Calendar](#)

## Policy Update

### New DRC BEACON Option – Lexiles and Quantiles!

In late fall, DRC BEACON will provide a new option that districts have requested — a Lexile and Quantile report to the student ISR. This option will be available at a nominal fee of \$1.50 per student for districts choosing to include the report; however, the DRC BEACON testlets and comprehensive tests will continue to be available at no cost to districts that do not select this option. The \$1.50 per student cost covers the MetaMetrics licensing fee for reporting Lexiles and Quantiles. Interested schools and districts will receive additional information on this enhancement in November.

### How are Georgia Assessments Developed?

In response to frequent questions about how Georgia's assessments are developed, we have created a new [Test Development Process](#) infographic that describes the steps in the development process, including who is involved, what is involved, and when each step occurs. Shorts videos and additional infographics provide an interactive look at the test development process. Educators can also indicate their interest in participating in future test development activities. We will provide district System Test Coordinators (STCs) with the list of educators who expressed interest before submitting nominations in January 2023.

### 2022 CCRPI Timeline

Graduation rates will be publicly released on October 6 at 10 a.m., and CCRPI reports will be publicly released in early-to-mid November. Specific dates will be provided when finalized.

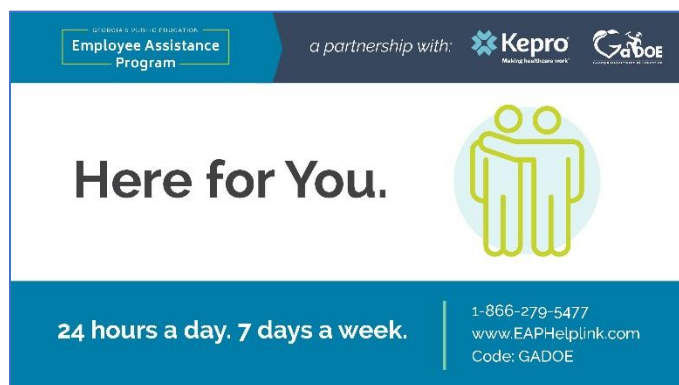
Contact: Allison Timberlake, Ph.D., Deputy Superintendent for Assessment & Accountability, [atimberlake@doe.k12.ga.us](mailto:atimberlake@doe.k12.ga.us), 470-579-6353.

## Assessment Update


### Access Resources to Support You with Georgia's Public Education EAP

Georgia's Public Education Employee Assistance Program (EAP) offers a wide variety of resources to help you when facing issues that interfere with your health and well-being at home or work, including up to six sessions of mental health counseling. GaDOE, in partnership with Kepro®, provides the EAP for all full-time K-12 public school teachers and staff in Georgia, along with Pre-K teachers. Household members and children up to age 26 are also eligible.


Services provided by the EAP are confidential and at no cost to you, 24 hours a day, seven days a week. Access the EAP by visiting [www.EAPHelplink.com](http://www.EAPHelplink.com) or calling 866-279-5177, access code GADOE.



GEORGIA'S PUBLIC EDUCATION  
Employee Assistance Program

a partnership with:  

**Here for You.**



24 hours a day, 7 days a week.

1-866-279-5477  
[www.EAPHelplink.com](http://www.EAPHelplink.com)  
Code: GADOE

### New Webinar Series: Understanding Assessment

A strong understanding of educational assessment is foundational to high-quality assessment practices in classrooms. An educator becomes assessment literate by mastering basic principles of sound assessment design, implementation, interpretation, and use to meet the diverse needs of all students.

To address the need for increased understanding of assessment, we are offering a nine-webinar series designed to provide K-12 educators with the foundational knowledge and skills necessary to design, select, interpret and use assessments to make better educational decisions for students and, ultimately, improve student achievement outcomes.

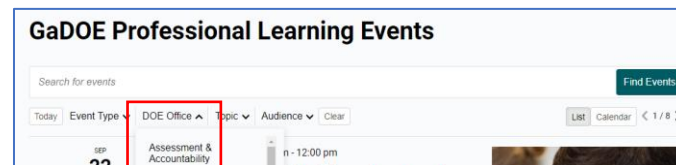
Content for this webinar series was originally developed by Drs. Carla Evans & Jeri Thompson at the National

Center for the Improvement of Educational Assessment and is licensed under a Creative Commons Attribution 4.0 International License. Some content has been adapted to make connections to assessments used in the state of Georgia.

Registration for the webinar series is available in the [GaDOE Professional Learning Events](#) catalog.

### Searching the GaDOE Professional Learning Events

All registration and recordings for Assessment Administration training webinars are now found in the [GaDOE Professional Learning Events](#). Choose Assessment & Accountability on the DOE Office drop-down menu to register for an upcoming event. This will take you to the registration pages for all upcoming webinars. Recorded webinars can be found after upcoming webinars. Recordings and presentation documents are posted within a week after the event.



**GaDOE Professional Learning Events**

Search for events

Today | Event Type | DOE Office | Topic | Audience | Clear

Assessment & Accountability | n - 12:00 pm

### 2022-2023 Student Assessment Handbook (SAH)

#### OCTOBER'S FOCUS – ELECTRONIC DEVICE/CELL PHONE USE AND SCRATCH PAPER

The focus on the *Student Assessment Handbook* series continues with more key points from the General Assessment Administration Guidance section beginning on page 58. STCs should review the entire section for more complete policies, protocols, and guidance.

#### Electronic Device/Cell Phone Use on Georgia State-Mandated Assessments (pp. 63-54)

Students are not permitted to use, or to bring into the testing environment, any electronic device, except for those devices used for medical purposes (e.g., glucose monitoring or cardiac monitoring), for any state-mandated assessments that could allow them to view, access, retain, or transmit information.

District and school protocols must be established to ensure students are notified and understand this requirement. Simple possession of a device during testing may be addressed in keeping with the system's

code of conduct and does not require an irregularity report to the Office of Assessment & Accountability. However, use of a device for any purpose during a test administration may result in invalidation.

**Common Irregularities Related to Electronic Device/Cell Phone Use**

Student cell phone rings during section 1 of the Algebra I EOC.

Test Examiners must follow district and school protocols in collecting or securing cell phones and other electronic devices before starting any test sessions.

Student uses a smartwatch to access the internet during the U.S. History EOC.

Test Examiners must remember that common electronic devices such as smartwatches have the functionality to access internet sites which may lead to an investigation for student cheating and possible invalidation of student scores.

**Scratch Paper (pp. 67-68)**

Scratch paper is a universal tool available to all students participating in Georgia assessments. It may not contain student or teacher writing of any kind other than the student’s name before starting a test session. It is not embedded in the online testing platform and must be provided to students in the testing environment according to directions provided in test administration manuals and examiner scripts. Scratch paper must be collected at the end of the test session, considered secure test material, and returned to the SchTC.

New for 2022-2023 Georgia Milestones EOC and EOG assessments, Writer’s Checklists, Periodic Tables, and Formula Sheets may be used for instructional use in the classroom **but are not allowable for use as scratch paper**. These resources are universal tools for all students for related assessment items at the appropriate times in the online platform.

**Common Irregularities Related to Scratch Paper**

Students are not provided scratch paper according to the Test Examiner’s script.

Test Examiners must read the script word-for-word and provide the test materials as indicated in the script and the test administration manual.

**Common Irregularities Related to Scratch Paper**

A third-grade student taking ELA section 1 is provided all three Writer’s Checklists as scratch paper. During the assessment, the student must decide which Writer’s Checklist is correct based on the item presented.

Writer’s Checklists, formula sheets, and periodic tables are considered universal tools for all students on the online platform and may not be used as scratch paper. They are presented correctly to the student as they work through the assessment. Test Examiners must not distribute these resources to students during testing.

**Highlight on New STCs**

Many tasks, trainings, and activities are required for STCs to develop and manage District Assessment Plans. Even when participating in current training sessions, many new STCs may continue to have basic questions. Two new courses have been developed to support new and veteran test coordinators in understanding the basic concepts of test security, test administration, and protocols for the Georgia Milestones assessments.

**TEST COORDINATOR COURSE**

The 2022-2023 Georgia Milestones Test Coordinator Course has been updated and is now



available on the Georgia Learns platform. The Test Coordinator training course walks school and district leaders through the state requirements for Georgia Milestones administration. The course has new videos, content, and interactive scenarios that make it more comprehensive and learner-centered. In addition, there is a badge for completing the course and passing all quizzes. Modules include:

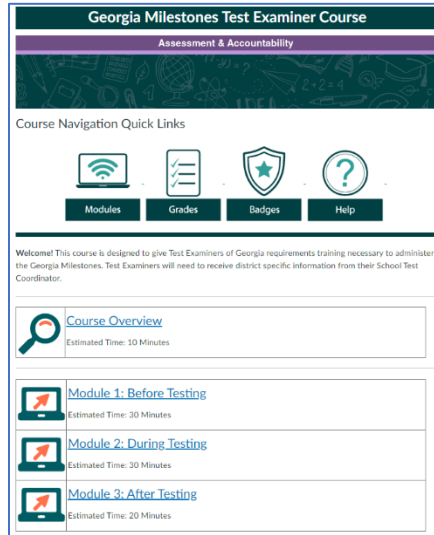
- Test Security
- Georgia Milestones Overview
- Scheduling, Training, and Resources
- Accessibility and Accommodations
- Test Setup and Administration
- Reporting

This course provides state information regarding the Georgia Milestones assessment administration and coordinates with district-specific guidance.

[How to Access Georgia Learns.](#)

**GEORGIA MILESTONES TEST EXAMINER COURSE**

Test Coordinators have asked for a turn-key solution to training district and school assessment staff. This new



course provides requirements for test security, accommodations, and administration of state-mandated testing. The course offers videos, resources, interactive components, and learner reflection. Embedded

quizzes are included to verify learner knowledge, and completion badges are earned to validate course completion. STCs and SchTCs are advised to review the course so they can supplement what is learned with local requirements and logistics.

Please contact Joe Blessing if you have questions regarding the Georgia Learns courses.

[jblessing@doe.k12.ga.us](mailto:jblessing@doe.k12.ga.us).

Contact: Sandy Greene, Ed.D., Director of Assessment Administration, [sgreene@doe.k12.ga.us](mailto:sgreene@doe.k12.ga.us), 470-579-5395.

**Test Development**

*“Most educators aren’t aware of how questions are reviewed.”*

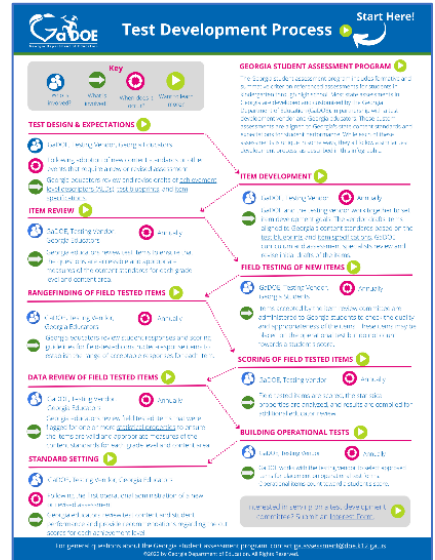
*“I didn’t realize that teachers from all over Georgia reviewed the test.”*

*“I was not aware of how much work it takes to create a standards-based item bank and that educators in various roles participate.”*

The quotes above are from educators who participated in the Georgia Milestones Item & Data Review meeting

in July 2022. To help more educators understand the development process for Georgia assessments, we have developed an interactive infographic that summarizes the test development process.

The Test Development Process infographic describes the steps in the development process, including who is involved, what is involved, and when each step occurs. At the top of the page, readers are directed to start with a short video that describes the overall test development process and the features of the infographic. For additional information about a particular step in the development process, readers can click the



green video icon to view a short presentation. For some steps in the development process, hyperlinks are provided, which lead to additional infographics for those wanting more detailed information on topics such as achievement level descriptors, test blueprints, and item specifications. Finally, at the bottom right of the infographic, educators can learn more about serving on a test development committee and submit an interest form if they want to be considered for future opportunities.

To view or download the Test Development Process infographic, visit our new [Test Development](#) webpage.

Contact: Jan Blose, Ed.D., Director of Assessment Development, [jblose@doe.k12.ga.us](mailto:jblose@doe.k12.ga.us), 404-275-5147.

**DRC BEACON**

**Know More... Do Better... Understanding DRC BEACON’s Seasons**

As with many things, the more we know and understand, the more our performance improves. DRC BEACON is designed with educators and their students in mind to support improved performance by ensuring that the most

helpful information is available. That means students and their teachers understand where they are: the content mastered and the content that’s next in a learning progression.

Another way BEACON supports understanding performance is by providing a growth measure. Growth on DRC BEACON is reported as the difference in scale scores from two test administrations.

- If a Grade 6 student takes the full BEACON math assessment in the fall and again in the winter and scores 500 and 540, growth would be 40 points.
- Student growth of 40 points based on fall and winter season test administrations is statistically different from student growth of 40 points based on fall and spring season test administrations.

As the school year progresses and students complete additional BEACON assessments, the ability to understand their growth across the school year will assist in closing learning gaps and understanding student needs across learning progressions. The DRC BEACON administration window is available for testing from August 1 to June 30. However, the year is broken into seasons. The seasons shown here allow for determining student growth from one testing season to another.

DRC BEACON Seasons	
	Fall Season Aug 1 – Nov 30, 2022
	Winter Season Dec 1, 2022 – Feb 28, 2023
	Spring Season Mar 1 – Jun 30, 2023

If you are watching growth, you’ll want to schedule sessions in distinctly different seasons. You may wish to join the Using Beacon to Inform Instruction training. The registration link is available in [GaDOE Professional Learning Events](#).

Dates	Assessment Tasks and Reminders
8/1/2022 – 6/30/2023	2022-2023 DRC BEACON Administration Window

Contacts:

- Missy Shealy, Assessment Specialist, [mshealy@doe.k12.ga.us](mailto:mshealy@doe.k12.ga.us), 470-579-5393.
- Joe Blessing, Program Manager, [jblessing@doe.k12.ga.us](mailto:jblessing@doe.k12.ga.us), 470-579-6326.
- Brian Collier, Assessment Specialist, [brian.collier@doe.k12.ga.us](mailto:brian.collier@doe.k12.ga.us), 470-579-6355.

## Formative Instructional Practices (FIP)

### Webinar on New FIP Modules

Join the webinar on Thursday, October 13, at 10 a.m. for an overview of the new FIP Online Professional Learning Modules for 2022-2023. The series is *Assessment 101: Empowering Leaders and Teachers to Engage Parents in Student Learning*. Three modules and highlights will be shared about the content in each module. They are 1) *A Purposeful Approach to Assessment*, 2) *The Georgia Student Assessment Program*, and 3) *Data Talk: Understanding and Communicating Assessment Results*.

The session previews files that are available to download as resources. Resources support leaders and teachers in communicating accurately with stakeholders about the purpose and use of different types of assessments in a balanced assessment system. Recommendations will be offered about the educators who can benefit most from the content in the new modules. Invite your colleagues to participate in this webinar. See the link to register for this webinar at the end of the newsletter under “FIP Courses.”

### [Overview of New FIP Online Professional Learning Courses](#) — Thursday, October 13 at 10-11 a.m.

All FIP webinar registration links, webinar recordings, and associated presentation handouts for 2022-2023 will be available from the [GaDOE Professional Learning Events](#).

Contact: Kelli Harris-Wright, Assessment Specialist, [kharris-wright@doe.k12.ga.us](mailto:kharris-wright@doe.k12.ga.us), 470-579-6329.

## GKIDS 2.0 and GKIDS Readiness Check

### GKIDS Readiness Check Window Closing

Teachers should ensure that Readiness Check data entry for their students has been completed by their district’s Readiness Check closing date. These data provide rich information that supports planning for student instruction for the remainder of the school year. Once the designated GKIDS 2.0 Readiness Check window closes, teachers can no longer enter student data. STCs are encouraged to monitor their local readiness check window and notify SchTCs of upcoming closures.

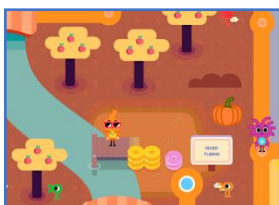
The next GKIDS 2.0 training will be held Thursday, October 6, focusing on Readiness Check available reports and how those can be used to plan student instruction. Registration information is found in the GaDOE PL Events Catalog.

Dates	Assessment Tasks and Reminders
7/5/2022 – 10/19/2022	GKIDS 2.0 Readiness Check Window
7/5/2022 – 5/15/2023	2022-2023 GKIDS 2.0 Platform Open

Contact: Bobbie Bable, Assessment Specialist, [bbable@doe.k12.ga.us](mailto:bbable@doe.k12.ga.us), 470-579-6324.

## Keenville

The fall season has arrived in Keenville! The leaves are changing colors, and it appears to be apple-picking time for the Keens. Here in Georgia, some districts have enjoyed (and others are looking forward to) a fall break and are ready to jump into the second quarter of the school year.



### Suggested Second Quarter Keenville Games

For English language arts, in both grades 1 and 2, the Keens suggest assigning the following games:

- **Cave Explorer** and **Keenbot** are fun, interactive reading-informational games with a combined focus

on **Craft and Structure** and **Integration of Knowledge and Ideas**. **Cave Explorer** encourages students to compare texts with questions aligned to the **RI9** standard, and **Keenbot** integrates interesting science phenomena topics into the reading passages.

- For students not quite ready for reading comprehension games, continue to assign **Museum of Mysteries**, **Harbor Phonics**, and **Peachling Playground** to formatively assess your student’s reading readiness. These games proved to be highly popular in the first quarter and helped to promote student self-efficacy in literacy.

For mathematics, the Keens recommend:

- For Grade 1, **Unit 2: Developing Base Ten and Number Sense** – Maintain current assignments of **Cloud Hopper** and **Treat Factory** and add **Farmers Market**.
- For Grade 2, **Unit 2: Becoming Fluent with Addition and Subtraction** – Maintain current assignment of **Treat Factory** and add **Keenville Sheriff**, **Captain Peachbeard**, **Farmers Market**, and **River Tubing**, as the standards are taught throughout the unit.

Dates	Assessment Tasks and Reminders
8/1/2022 – 6/30/2023	2022-2023 Keenville Administration Window

For functionality and technical support, please contact [keenvillesupport@doe.k12.ga.us](mailto:keenvillesupport@doe.k12.ga.us).

Contacts:

- Tiffani Taylor, Assessment Specialist, [tiffani.taylor@doe.k12.ga.us](mailto:tiffani.taylor@doe.k12.ga.us), 470-763-1081.
- Lisa Hardman, Assessment Specialist, [lhardman@doe.k12.ga.us](mailto:lhardman@doe.k12.ga.us), 470-579-6354.

## ACCESS for ELLs

### Materials Ordering Window

The ACCESS for ELLs and Alternate ACCESS for ELLs Materials Ordering Window opens Wednesday, October 5, through Monday, November 21. Per the recent memo from DRC Customer Service (9/28/22), STCs must place a materials order regardless of testing mode (online or paper). **If STCs do not order test materials for their district during this period, the**

**school system will not receive any materials in their initial shipment.**

Please view the **Ordering Materials** training module of the *Online ACCESS for ELLs: Administration* or the *Paper ACCESS for ELLs: Administration* courses located within the [WIDA Secure Portal](#).

All ACCESS for ELLs test materials will be ordered from DRC using [WIDA AMS](#). Test Coordinators must follow the test materials ordering procedures outlined in the *WIDA Assessment Management (WIDA AMS) User Guide* in WIDA AMS under My Applications > General Information > Documents.

WIDA AMS requires users to enter enrollments for each school rather than at the district level. Likewise, District/School labels are generated at the school level.

District or school users will enter student counts at each grade level and assessment as applicable. An overage will be provided based on the ordered materials during the ordering window.

While STCs must order pre-ID labels separately, these documents will be included in the initial shipment regardless.

### Pre-ID Data Upload Window

The 2022-2023 WIDA ACCESS for ELLs and WIDA Alternate ACCESS for ELLs Pre-ID Data Upload window begins on Wednesday, October 5, and ends at 11:59 PM ET on Monday, November 21. **You must submit valid Pre-ID records by November 21 to receive Pre-ID labels for paper testers.**

STCs must upload students into [WIDA AMS](#) for online and paper testing. Students uploaded after this date will not receive Pre-ID labels, and school staff must use District/School labels and bubble student demographic information on student response documents. **There are no exceptions.**

In addition, the Pre-ID/Multiple Student Upload (MSU) File Layout has **important changes** for the Braille Accommodation fields, summarized in a recent email to WIDA and in WIDA AMS Student Management.

As with other student file uploads (e.g., MSU for Georgia Milestones), districts are encouraged to use a “fix in SIS and re-upload to AMS” method rather than manually

fixing errors in the WIDA AMS platform. This method promotes data accuracy at the source (i.e., the SIS database) and will improve assessment matching of student records during Accountability processing.

Dates	Assessment Tasks and Reminders
9/27/2022	Pre-Testing Online Ordering Training Module <a href="#">Event Link in WIDA Secure Portal</a>
October	Order test material
October	Upload Pre-ID File
October	Notify staff braille sample items and user guides have been added to the <a href="#">ACCESS Test Practice and Sample Items</a> – <a href="https://wida.wisc.edu/">https://wida.wisc.edu/</a>
10/5/2022 – 11/21/2022	Test Materials Ordering Available in WIDA AMS.
12/5/2022 – 3/3/2023	WIDA AMS Test Setup Available for Test Sessions

Contact: Mary Nesbit-McBride, Ph.D., Assessment Specialist, [mnesbit@doe.k12.ga.us](mailto:mnesbit@doe.k12.ga.us), 470-579-6345.

## Georgia Alternate Assessment 2.0

### Spring 2022 Results

Spring 2022 GAA 2.0 results are now available in SLDS. These results may be accessed in the historical and operational dashboards for GAA 2.0. Additionally, individual student reports for Spring 2022 are available to access and download through student profiles in SLDS. Summary reports and data from Spring 2022 remain open for STCs in the MyGaDOE Portal.

### Test Examiner Book Goes Online!

Technological enhancements have been made to the GAA 2.0 assessment program. While students will continue to view test content from the paper Student Booklet, Test Examiners will be able to view the entire script, passages, items, and answer choices sequentially for each content area test and enter student answer choices directly into the online platform during test administration.

STCs must update their assessment training and administration plans and procedures for the Spring 2023 assessment window accordingly.

## Assessment Administration Procedures and Security

All educators involved in the assessment process must participate in all-designated test security and test administration training. STCs must review the online response entry procedures needed for Test Examiners to facilitate positive testing experiences for themselves and their students.

### Selected Considerations

- Test Examiners must provide School Test Coordinators (SchTCs) with completed Learner Characteristics Inventory (LCI) forms before test administration.
- Test Administrators must communicate and identify students that may have the Stopping Rule applied during test administration. Remember, all students must take each GAA 2.0 content-area assessment; even if the Stopping Rule was applied and approved by the STC for the first content area administered, the Test Examiner must administer the remaining tests.
- Test Administrators must enter the testing platform by entering <https://ga.drcedirect.com> in the web browser address bar. All login information is secure. Assessments and previewing sessions must be conducted with school district equipment during school hours.
- Test Examiners must treat all Student Test Booklets as secure documents upon receipt and return.
- Test Examiners must consider how their use of a tablet, laptop, or desktop computer may impact their needs for surface area space.
- Test Examiners must have reliable access to the Internet.
- Assessments should be started and completed as soon as appropriate to allow for the timely resolution of potential challenges and the provision of student-centered supports, including breaks.

### Test Preview and Preparation Sessions

STCs must organize preparation sessions for the Test Examiners. Remember that educators may log into DRC's web-based test examiner application two weeks before the GAA 2.0 test administration window opens.

STCs must determine how designated school district employees will securely preview this information. Magnification of secure test content is strongly discouraged during preview sessions.

ONLY GaPSC-certified school district staff who have completed the necessary test security training provided by the STC may preview secure test material. Test content may not be viewed after the school day or off district grounds. District staff must not give login credentials to anyone not employed by the school district and directly involved in the administration of GAA 2.0.

STCs are encouraged to have teachers preview materials in pairs, with one teacher acting as the student and one teacher acting as the Test Examiner.

### Materials Ordering

The enrollment application for GAA 2.0 will open from Monday, November 14, to Tuesday, December 13. STCs must enter the number of students scheduled to take GAA 2.0 this spring, including seniors who need to take the assessment before graduation and the number of students who require Braille forms into the INSIGHT platform. STCs should include newly identified third-grade students and transfer students in participant counts.

Verify that changes in assessment placement (Georgia Milestones to GAA 2.0) that occur between school levels (i.e., elementary to middle school and middle school to high school) are accurate and the rationales for such decisions are well-evidenced on the GAA 2.0 Eligibility form, as the impact of such a change extends well beyond test administration.

Contact: Mary Nesbit-McBride, Ph.D., Assessment Specialist, [mnesbit@doe.k12.ga.us](mailto:mnesbit@doe.k12.ga.us), 470-579-6345.

## Georgia Milestones

### Georgia Milestones Winter End-of-Course Pre-Administration

The Winter End of Course setup in DRC INSIGHT includes updates and features to the program that will change how tests are managed, accommodations are assigned, and student progress is monitored.

Due to these changes, we suggest that all STCs participate in the Tuesday, October 11 Pre-

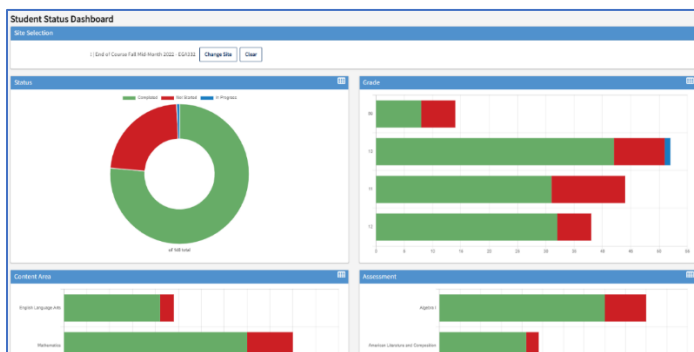


Administration and Test Setup training even if you aren't planning to administer testing in Winter. The training will explain the new changes to the program and processes for implementation. Register for the webinar in the [GaDOE Professional Learning Events](#).

## STC and SchTC Assessment Monitoring Tools

### STUDENT STATUS DASHBOARD

STCs should become familiar with the Student Status Dashboard, which shows a graphical interface of testing in a school.



Test Coordinators can drill down and see detailed student information to evaluate testing progress during the window, including completion status.

Last Name	First Name	Grade	Content Area	Module	Assessment	Status	Start Time	End Time	Duration
		11	Mathematics	Algebra 1 - Section 1	Algebra 1	Completed	08/18/2022 10:33 EDT	08/18/2022 11:38 EDT	1 Hours 5 Minutes
		11	Mathematics	Algebra 1 - Section 2	Algebra 1	Completed	08/18/2022 11:41 EDT	08/18/2022 12:12 EDT	0 Hours 31 Minutes
		11	Science	Biology - Section 1	Biology	Completed	08/18/2022 09:12 EDT	08/18/2022 09:52 EDT	0 Hours 40 Minutes
		11	Science	Biology - Section 2	Biology	Completed	08/18/2022 09:54 EDT	08/18/2022 10:11 EDT	0 Hours 27 Minutes
		09	Science	Biology - Section 1	Biology	Completed	08/18/2022 09:11 EDT	08/18/2022 09:33 EDT	0 Hours 22 Minutes
		09	Science	Biology - Section 2	Biology	Completed	08/18/2022 09:38 EDT	08/18/2022 09:50 EDT	0 Hours 12 Minutes



The [Monitoring Student Progress Video](#) shows how to monitor using the Student Status Dashboard and Status Reports.

### TEST MONITORING APPLICATION

The Test Monitoring application uses a Monitoring Code to assign a participant's test session to the SchTC, who provides the monitoring code to test examiners through a secure exchange. The SchTC can monitor, in real-time, students' progress in active testing sessions. Test monitors for DRC BEACON may be test examiners if test examiners can create test sessions.



Please review the [Training Video](#) for more details.

## Accommodations Import File

The Accommodations Import file allows districts to batch upload student accommodations to DRC INSIGHT. This feature is an alternative to manually assigning and editing accommodations. Districts will be able to create accommodation import files from GO-IEP, the state's IEP application, by late October.

A couple of reminders for using the Accommodations Import file are listed here:

- The Accommodation Import file should be uploaded before the MSU so that the automatic process of setting up test sessions can incorporate accommodation information.
- Accommodations for students with IEP, EL/TPC, and section 504 plans may be included in one or three import files. Districts may also use a combination approach that consists of file import uploads and manual entry.
- Students with no errors on their uploaded record will populate in DRC INSIGHT.
- Students with errors on their uploaded record (e.g., accommodation not valid for the content area) will not populate in DRC INSIGHT. These students will be flagged in an error report, and their records will need to be fixed in the import file and reuploaded or manually entered on INSIGHT.
- Students with duplicate records on the Accommodation Import file (i.e., same student, same content area, same accommodations) will be flagged as an error. Still, they will be populated in DRC INSIGHT with the *last* entry from the import file.

STCs can visit DRC's Georgia Online Help to learn more about uploading accommodations. If you need assistance uploading an accommodations file, contact DRC Customer Service at 866-282-2249 or [gahelpdesk@datarecognitioncorp.com](mailto:gahelpdesk@datarecognitioncorp.com).

## Fall Mid-Month 2022 EOC Preliminary Reports

Fall Mid-Month 2022 EOC preliminary reports continue to be posted in INSIGHT. STCs and SchTCs monitor student progress to verify that all tests are submitted and correctly assign invalidation/irregularity codes for any students listed on the LCE roster.

## Winter 2022 EOC Preliminary Reporting Schedule

GaDOE prioritizes providing student results to districts and schools as quickly as possible to inform course grades and graduation decisions. For Winter 2022, preliminary reports will be released on the following timeline:

Projected Reporting Dates	
Mathematics, Science, and Social Studies	Thurs., 12/8/2022
ELA	Thurs., 12/15/2022

STCs and SchTCs are reminded to test graduating seniors early in the window when possible.

Additional information regarding EOC Reporting may be found in the [Student Assessment Handbook](#) (p. 108).

## Return of Student Growth Percentiles

After a pause in reporting due to pandemic-related data limitations, Student Growth Percentiles (SGPs) will return to the Georgia Milestones program in 2022-2023. SGPs will be calculated after the spring administration by DRC as a part of the Georgia Milestones program. They will be reported alongside achievement scores on the final version of Individual Student Reports. SGPs will

be calculated using a minimum of two years of data and will utilize the assessment data (including student identification and demographic data) provided in DRC INSIGHT. Districts should actively find and fix errors in student demographic information in their SIS before creating and uploading the MSU file to DRC INSIGHT. If you use DRC BEACON, review the student information in the data rosters for accuracy. School leaders and teachers can help with these data accuracy efforts by reviewing local attendance rosters.

Some common data errors to look for include:

- Missing or incorrect GTIDs
- Duplicate student names
- Incorrect spelling or hyphenation of student names
- Reversals of student first name and last name
- Missing or incorrect birthdates
- Students incorrectly associated with “service” school instead of their “home” (FTE) school

If errors are found after the MSU is uploaded but before students’ testing, these errors should still be fixed in the SIS, and then a new MSU can be created and uploaded to INSIGHT. There will be no corrections to SGPs after testing is completed.

Dates	Georgia Milestones Tasks and Reminders
October	Work with district special education department to prepare for Winter EOC.
October	Work with district technology staff to prepare for Winter EOC.
October	Assign School Test Coordinator Course to Test Coordinators and Test Examiner Course (available 10/11/22) to examiners.
October	Watch Pre-Administration Training and prepare a redelivery plan.
October	Review Winter EOC preliminary reporting schedule and develop a district plan for sharing reports.
November	Review spring dates and gather paper/pencil requirements for upcoming spring enrollment counts.
November	Ensure graduating seniors are scheduled for testing in time to receive reports for graduation.
October/ November	Enter Test Setup for Winter administration.
7/18/2022 – 11/23/2022	Fall MM EOC Test Setup Window
10/3/2022 – 1/13/2023	Winter 2022 EOC Test Setup Window
10/10/2022 – 10/21/2022	October 2022 Mid-Month EOC Testing Window
11/7/2022 – 11/18/2022	November 2022 Mid-Month EOC Testing Window
11/28/2022 – 1/6/2023	EOC Winter 2022 Main Administration

Contacts:

- Joe Blessing, Program Manager, [jblessing@doe.k12.ga.us](mailto:jblessing@doe.k12.ga.us), 470-579-6326.
- Brian Collier, Assessment Specialist, [brian.collier@doe.k12.ga.us](mailto:brian.collier@doe.k12.ga.us), 470-579-6355.
- Missy Shealy, Assessment Specialist, [mshealy@doe.k12.ga.us](mailto:mshealy@doe.k12.ga.us), 470-579-5393.
- Adrienne Walker, Ph.D., Program Manager, Data Quality and Reporting, [adrienne.walker@doe.k12.ga.us](mailto:adrienne.walker@doe.k12.ga.us), 470-579-6368

## NAEP/NCES

Districts and schools selected for the Age 13 Long Term Trend (LTT) assessment will begin testing this month. The window is Monday, October 10, through Friday, December 16. The LTT has been given since the early 1970s and measures students’ math and reading progress on the same set of test questions since that time. National results will be released in 2023.

The state results from the spring 2022 assessment will be released Monday, October 24. Reading and math scores for 4<sup>th</sup> and 8<sup>th</sup> graders and questionnaire answers will be summarized and shared after the public release.

Dates	Assessment Tasks and Reminders
10/3/2022 – 11/25/2022	NAEP – PISA Administration Window ( <i>selected schools</i> )
10/10/2022 – 12/16/2022	NAEP – Age 13 Long-term Trend ( <i>selected schools</i> )

Contact: Bobbie Bable, Assessment Specialist, [bbable@doe.k12.ga.us](mailto:bbable@doe.k12.ga.us), 470-579-6324.

## Accountability Update

As a reminder, given the impact of pandemic-related data limitations on states’ accountability systems, the U.S. Department of Education approved Georgia’s one-year modifications to CCRPI, which include the following for the 2022 CCRPI report: **Summative Ratings** – no overall 0-100 scores reported; **Progress** – no ELA and math progress (SGPs) reported; **Closing Gaps** – no Closing Gaps reported; and **Readiness** – no student attendance at elementary, middle, and high school reported, and no college and career readiness at high school reported.

The graduation rate will be the first indicator calculated. As in the past, graduation rates will be posted in the CCRPI MyGaDOE Portal for review for at least one week before the public release. Additional CCRPI indicator data will be released in phases in the portal for review before the anticipated November CCRPI public release. A specific timeline will be provided as soon as possible.

Please contact the GaDOE [accountability specialist](#) assigned to assist your district with any questions or concerns. Your district accountability Point of Contact gains critical information each month at the Accountability Lunch and Learns and is another good resource for you.

## GaDOE Professional Learning (PL) Events for October-December 2022

Are you looking for professional learning opportunities to support educator practice? Visit the [GaDOE Professional Learning Events](#) to view upcoming virtual webinars, webinar recordings, in-person events, on-demand content, and by-request workshop opportunities. Email Dawn Ashmore at [dashmore@doe.k12.ga.us](mailto:dashmore@doe.k12.ga.us) for additional information about the PL catalog.

All training STC training sessions are Microsoft Teams webinars. Please register with your district email address for the webinar in the [GaDOE Professional Learning Events](#) catalog or the link in the table below. Once registered, an email is sent from Microsoft Teams, [noreply@teams.registration.microsoft.com](mailto:noreply@teams.registration.microsoft.com), allowing you to add the webinar to your calendar.

*\*Conference and training session dates and times are subject to change.*

## Required Assessment Training Webinars

Date	Title <a href="http://login.community.gadoe.org/events">http://login.community.gadoe.org/events</a>	Time	Intended Audience
9/22/2022	<a href="#">GAA 2.0 Online Administration and Response Entry Overview</a>	10 a.m. – 12 p.m.	STCs, SchTCs, Special Ed Directors
10/6/2022	<a href="#">GKIDS 2.0 Readiness Check Reporting</a>	2 – 3:30 p.m.	STCs, SchTCs
10/11/2022	<a href="#">GA Milestones Test Setup &amp; Pre-Administration EOC Winter 2022/Spring 2023 Mid-Month</a>	10 a.m. – 12 p.m.	STCs, SchTCs
11/17/2022 (Updated)	<a href="#">ACCESS for ELLs – Pre-Administration and Test Integrity</a>	10 – 11:30 a.m.	STCs, SchTCs, ESOL Coordinators

## Optional Assessment Meetings

Date	Title <i>(Registration link in Assessment Update notification email)</i>	Time	Intended Audience
10/14/2022	Assessment Lunch and Learn	12 – 1 p.m.	STCs
10/28/2022	Assessment Office Hours – Focus on Best Practices Using the Test Monitoring Application	10 – 10:30 a.m.	STCs
11/18/2022	Assessment Lunch and Learn	12 – 1 p.m.	STCs
12/2/2022	Assessment Office Hours	10 – 10:30 a.m.	STCs

## DRC BEACON Courses

Date	Title <a href="http://login.community.gadoe.org/events">http://login.community.gadoe.org/events</a>	Time	Intended Audience
Webinar Recording	<a href="#">DRC BEACON Pre-Administration</a>	24/7	STCs
Webinar Recording	<a href="#">DRC BEACON/FIP Overview</a>	24/7	STCs, District Leaders, School Leaders
11/10/2022	<a href="#">Using DRC BEACON to Inform Instruction</a>	10 a.m. – 12 p.m.	STCs, District Leaders, School Leaders

## FIP Courses

Date	Title <a href="http://login.community.gadoe.org/events">http://login.community.gadoe.org/events</a>	Time	Intended Audience
Webinar Recording	<a href="#">Do Better by Students: FIP Professional Learning</a>	24/7	STCs, District Leaders, School Leaders, RESAs
10/13/2022	<a href="#">Overview of New FIP PL Courses – Assessment 101: Empowering Leaders and Teachers to Engage Parents in Student Learning</a>	10 – 11 a.m.	STCs, District Leaders, School Leaders, RESAs

## Georgia Milestones Courses

Title <a href="http://login.community.gadoe.org/events">http://login.community.gadoe.org/events</a>	Intended Audience
<a href="#">Introduction to Reading and Evidence-Based Writing, Gr 3-12</a>	Grades 3-12 ELA Teachers, Instructional Coaches, Assistant Principals,
<a href="#">Examining the Opinion Essay, Gr 3-5</a>	
<a href="#">Examining the Argumentative Essay, Gr 6-HS</a>	
<a href="#">Examining the Informative/Explanatory Essay, Gr 3-HS</a>	

Title <a href="http://login.community.gadoe.org/events">http://login.community.gadoe.org/events</a>	Intended Audience Principals, Literacy Coordinators
<a href="#">Best Practices for Narrative Writing, Gr 3-12</a>	
<a href="#">Narrative Writing on Georgia Milestone, Gr 3-12</a>	
<a href="#">Using Description in Narrative Writing, Gr 3-5</a>	
<a href="#">Using Description in Narrative Writing, Gr 6-8</a>	
<a href="#">Using Description in Narrative Writing, American Literature</a>	

### Understanding Assessment Webinar Series

Date	Title (Registrations for all sessions are at the link below.) <a href="https://login.community.gadoe.org/events/understanding-assessment-series-for-teachers">https://login.community.gadoe.org/events/understanding-assessment-series-for-teachers</a>	Time	Intended Audience
11/1/2022	Day 1 – Assessment Foundations for Teachers & Leaders	3 – 4:30 p.m.	Grades K-12 Teachers, Instructional Coaches, Teacher Leaders, School Leaders
11/15/2022	Day 2 – Formative Assessment Processes, Part 1	3 – 4:30 p.m.	
11/29/2022	Day 3 – Formative Assessment Processes, Part 2	3 – 4:30 p.m.	
12/6/2022	Day 4 – Formative Assessment Processes, Part 3	3 – 4:30 p.m.	
1/10/2023	Day 5 – Summative Classroom Assessment, Part 1	3 – 4:30 p.m.	
1/24/2023	Day 6 – Summative Classroom Assessment, Part 2	3 – 4:30 p.m.	
2/7/2023	Day 7 – Summative Classroom Assessment, Part 3	3 – 4:30 p.m.	
2/28/2023	Day 8 – Standardized Assessments	3 – 4:30 p.m.	
3/14/2023	Day 9 – Balanced Assessment Systems	3 – 4:30 p.m.	

### Georgia Learns Courses

[How to Access Georgia Learns](#) contains information and screenshots to assist educators in accessing courses in Georgia Learns.

### Assessment Coordinator Courses

Date	Title	Time	Intended Audience
Available Course	Georgia Milestones School Test Coordinator Course	24/7	STC
Mid-October	Georgia Milestones Test Examiner Course	24/7	STC, SchTC, Test Examiners
Coming Soon	Accessibility and Accommodations for Testing Course	24/7	STC, SchTC, Special Education Directors, ESOL Directors