

A System's Approach to the Evaluation of L4GA

Meltem Alemdar, Ph.D.

Associate Director of Ed. Research & Evaluation

Christopher Cappelli, MPH

Senior Research Associate

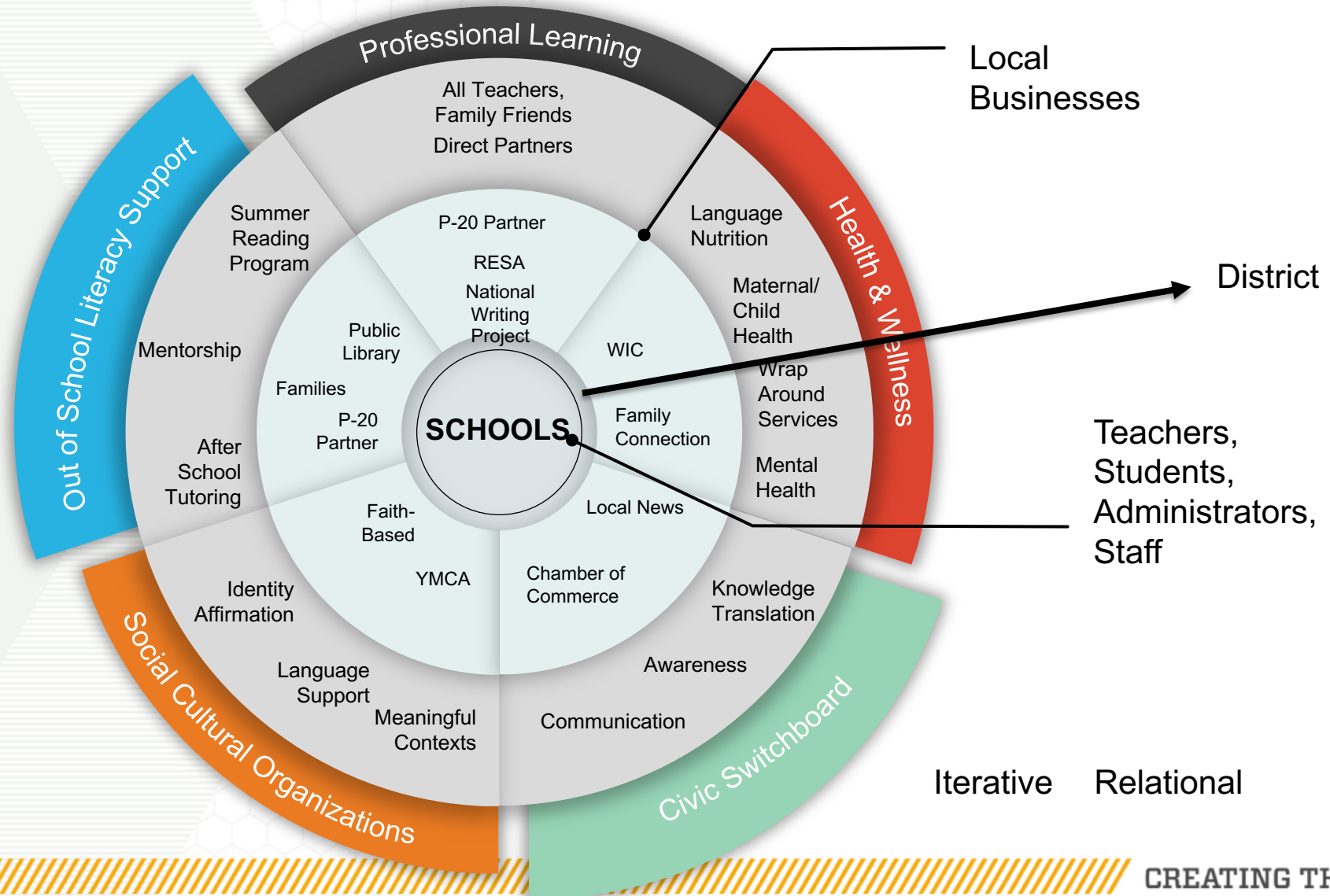
Justina Jackson, Ph.D.

Research Associate II

EVALUATION QUESTIONS

- **Who is involved in program partnerships? What is the nature of each partner?**
- **Which organizations and institutions influence whether and how partnerships use evidence-based literacy interventions?**
- **How is this partnership affecting the student outcomes?**

PARTNERSHIP FRAMEWORK



Level of Collaboration (Frey, 2006) (weakest to strongest)

Networking: Aware of organization; Partnership is loosely defined; Little communication; All decisions are made independently.

Cooperation: Provide information to each other; Somewhat defined roles; Formal communication; All decisions are made independently.

Coordination: Share information and resources; Defined roles; Frequent communication; Some shared decision-making.

Coalition: Shares ideas; Shares resources; Frequent and prioritize communication; All members have a vote in decision-making.

Collaboration: Members belong to one system; Frequent communication is characterized by mutual trust; Consensus is reached on all decisions.

RESPONSE RATES

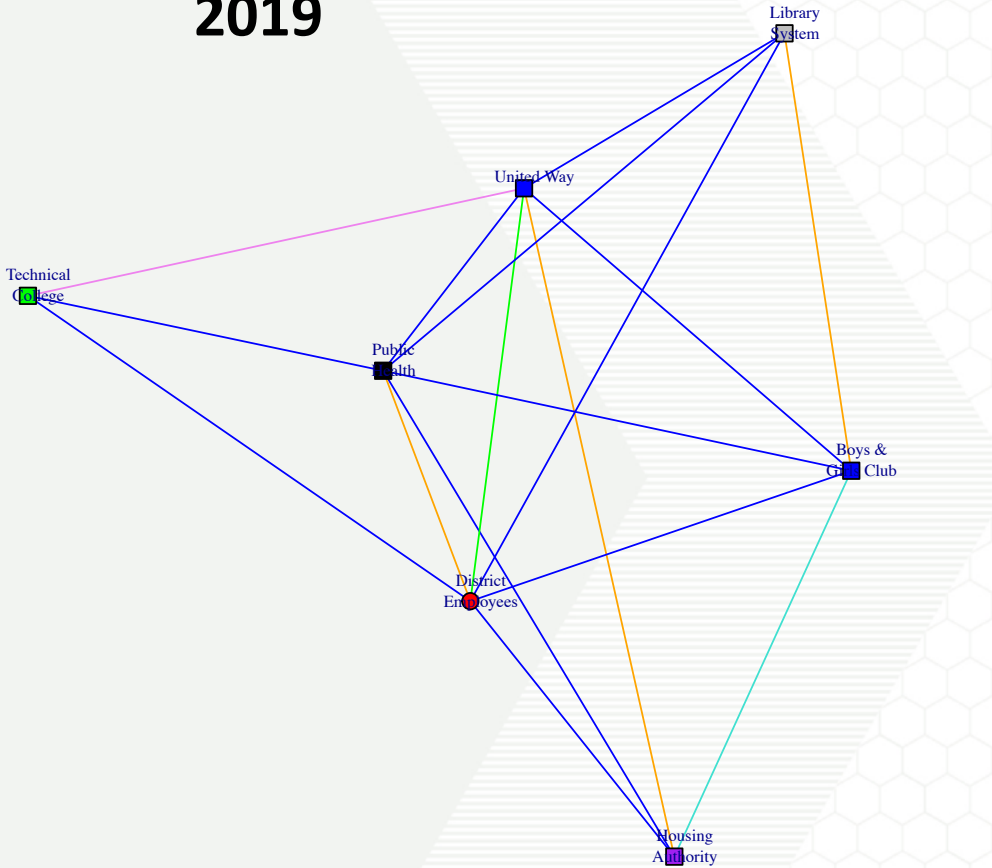
- 2019 Response Rates
 - 5 districts greater than 50%
 - 7 districts between 30% and 50%
 - 26 districts below 30%
- 2020 Response Rates
 - 34 districts greater than 50%
 - 4 districts between 30% and 50%
 - 0 districts below 30%
- 2019 to 2020 Comparison Maps
 - For a comparison of network maps between 2019 and 2020, a minimum 50% response rate was required

SAMPLE RESULTS

SPRING 2019 & SPRING 2020

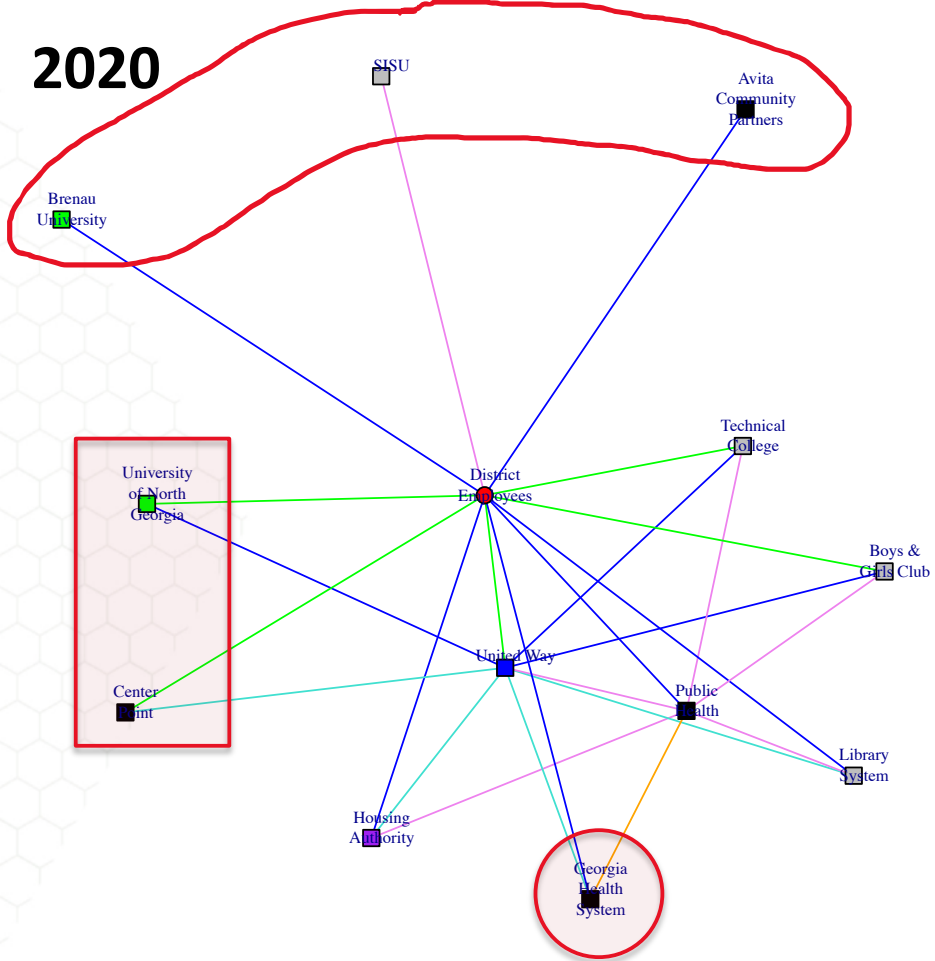
PARTNERSHIP NETWORK: DISTRICT 1

2019



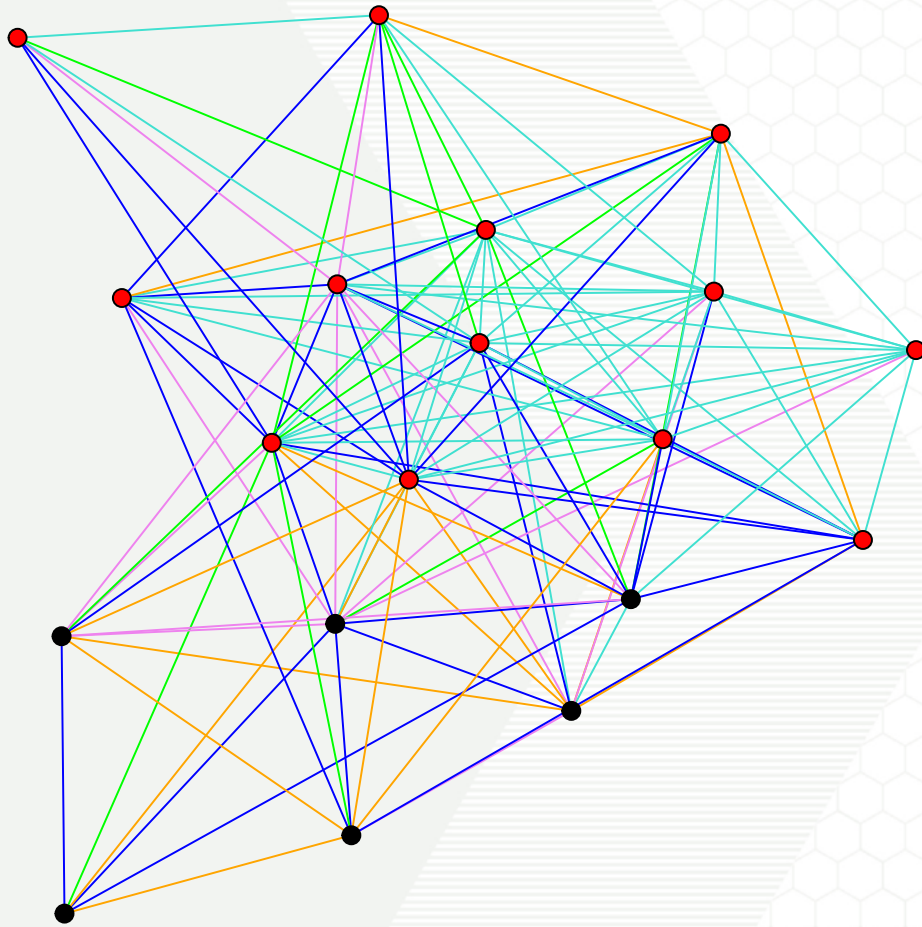
Tie Strength	Partner Domain
Networking (Pink line)	Professional Learning (Green circle)
Cooperation (Orange line)	Health & Wellness (Black circle)
Coordination (Blue line)	Civic Switchboard (Blue circle)
Coalition (Green line)	Social Cultural Organization (Purple circle)
Collaboration (Cyan line)	Out of School Literacy Support (Grey circle)
	School District (Red circle)

2020

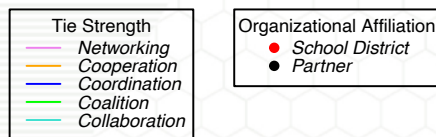


Tie Strength	Partner Domain
Networking (Pink line)	Professional Learning (Green circle)
Cooperation (Orange line)	Health & Wellness (Black circle)
Coordination (Blue line)	Civic Switchboard (Blue circle)
Coalition (Green line)	Social Cultural Organization (Purple circle)
Collaboration (Cyan line)	Out of School Literacy Support (Grey circle)
	School District (Red circle)

PERSON LEVEL NETWORK 2020: DISTRICT 1

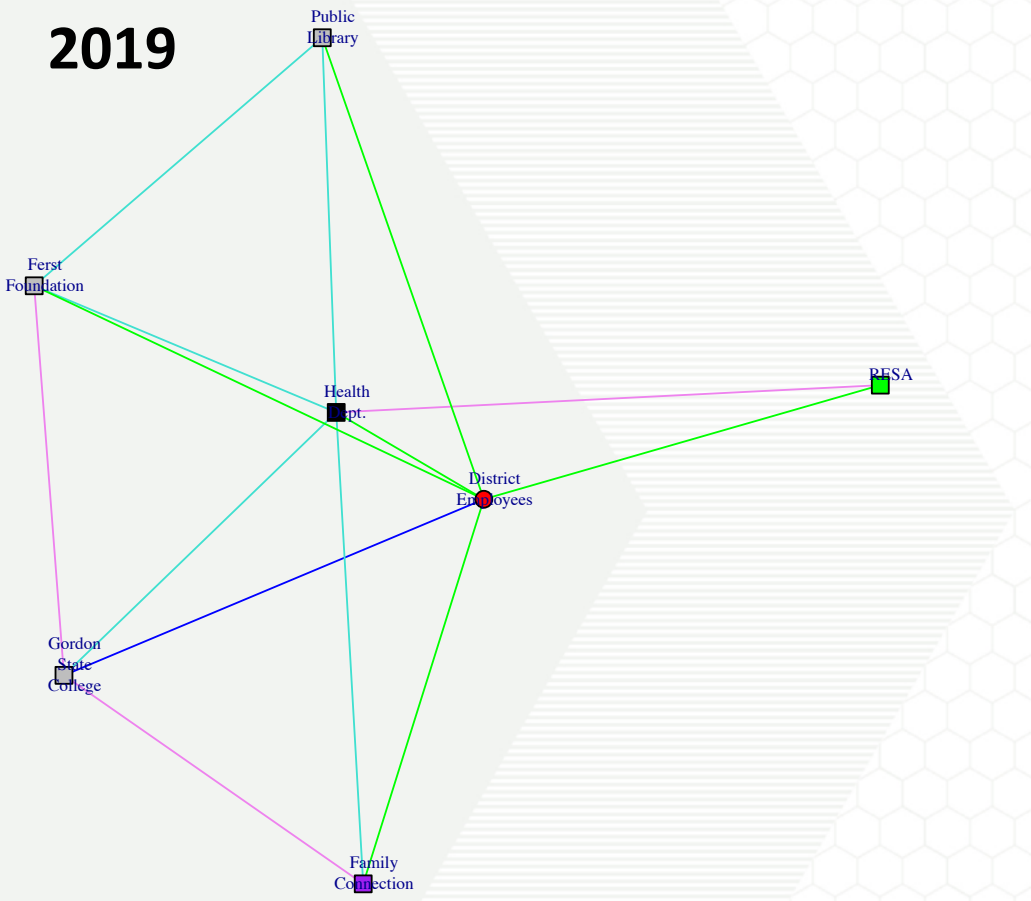


- This map is useful to understand how people are interacting with one another
- In this district, it is clear that the partners only interact with a few centrally located district personnel, illustrated by the clear separation between individuals employed by the district and individuals employed by partner organizations
- When the circles are labeled, the district has more information about exactly who the main network actors are



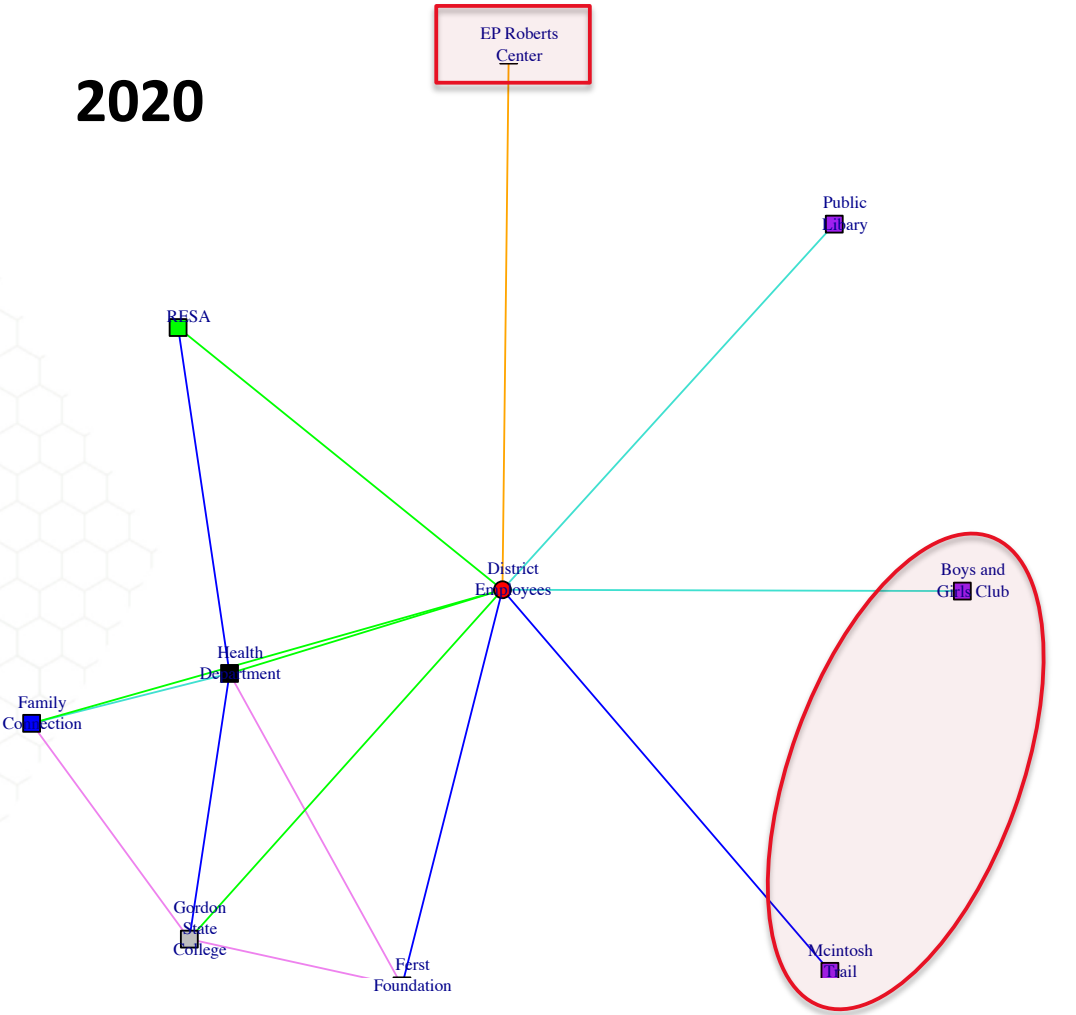
PARTNERSHIP NETWORK: DISTRICT 2

2019



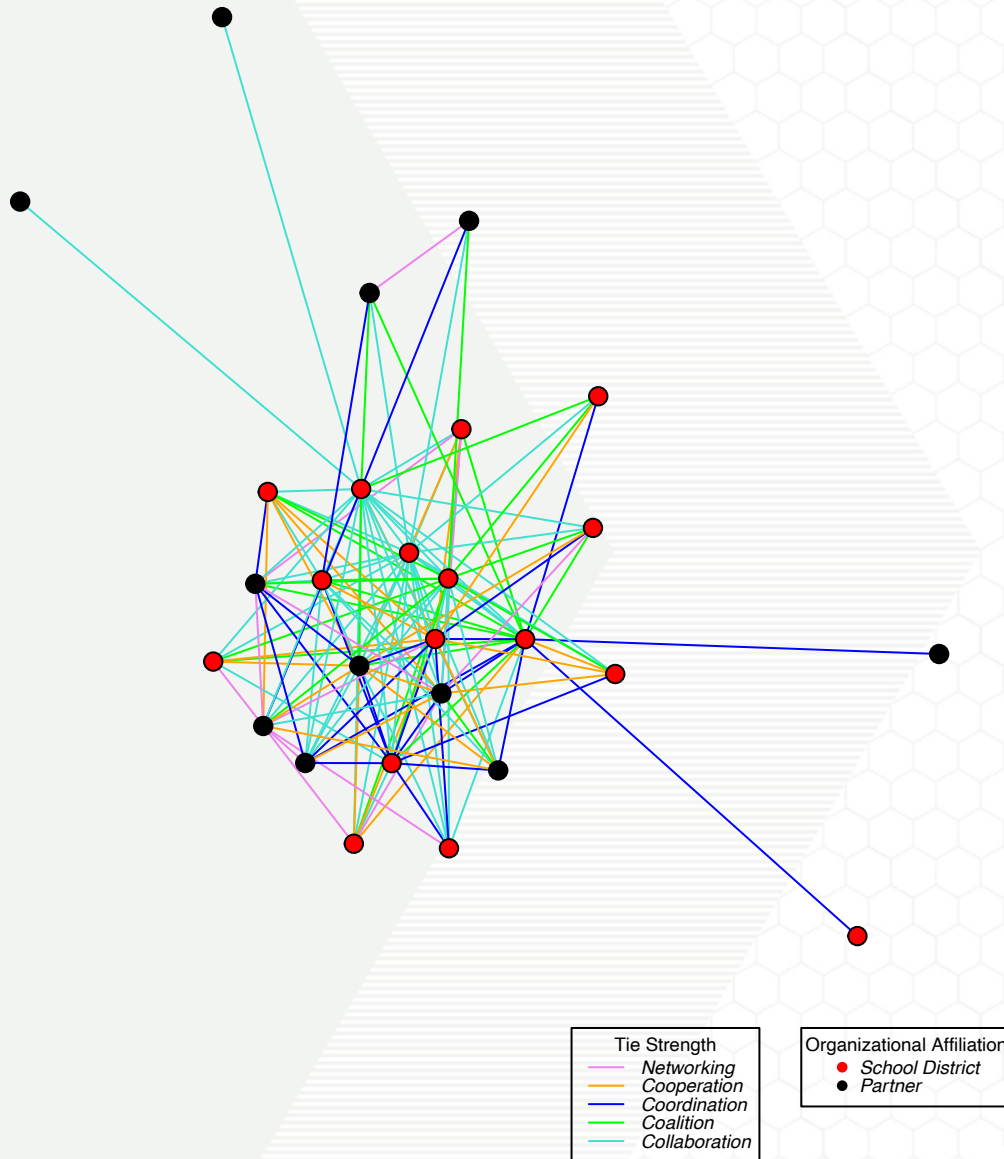
Tie Strength	Partner Domain
Networking	Professional Learning
Cooperation	Health & Wellness
Coordination	Civic Switchboard
Coalition	Out of School Literacy Support
Collaboration	School District

2020



Tie Strength	Partner Domain
Networking	Professional Learning
Cooperation	Health & Wellness
Coordination	Civic Switchboard
Coalition	Out of School Literacy Support
Collaboration	School District

PERSON LEVEL NETWORK 2020: DISTRICT 2



- In this district, individuals employed by partner organizations are more integrated with individuals who work with the school district. In other words, there is no “point person” in the district, but rather, partners are communicating with multiple different people
- This may indicate a safer network – should individuals in the district move out of the district, partners are connected to others as well
- When the circles are labeled, the district has more information about exactly who the main network actors are

ONGOING ANALYSES

- Network measures will be used to understand the social network maps depicted here for all districts with acceptable response rates
- When we compare maps from 2019 to 2020, we can look at a number of measures to understand network dynamics. Some examples are:
 - Network Density – How connected is the network? If people leave the network, are there others in the network with access to the same type of information?
 - Closeness Centrality – How many other people can each person in the network directly reach? Who is best placed in the network to influence the entire network most closely?
 - Cliques – the largest subgroup of people in the network all directly connected to each other. Does the number of directly connected people grow over time?
 - Mean Tie Strength – Did the average level of collaboration in the network change over time?



**Georgia
Tech**  **Center for Education
Integrating Science,
Mathematics, & Computing**
College of Sciences

STEM @ GATECH

CREATING THE NEXT®

