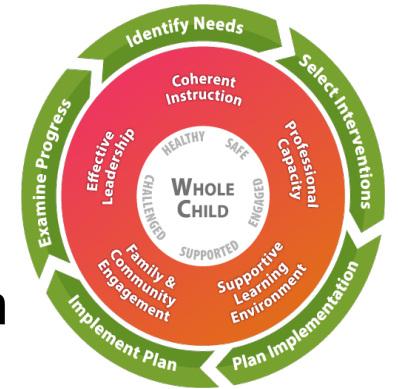


4 Ways to Get a Handle on Maintenance of Effort

SELDA
July 19, 2023

**Georgia Department of Education
Special Education Services and Supports Division**
Nicole Croom, Program Specialist



Agenda

- Federal requirement to supplement, not supplant
- Maintenance of Effort (MOE) requirement
- Methods to Meet MOE
- MOE Eligibility Worksheet
- Ways to Reduce MOE
- Resources

#1 Be Familiar with the Federal Regulations

Federal Requirement to Supplement, Not Supplant

Supplement, Not Supplant

[34 CFR § 300.202](#) Use of amounts explains the appropriate use of **IDEA, Part B funds** for students with disabilities.

(a) General. Amounts provided to the LEA under Part B of the Act—

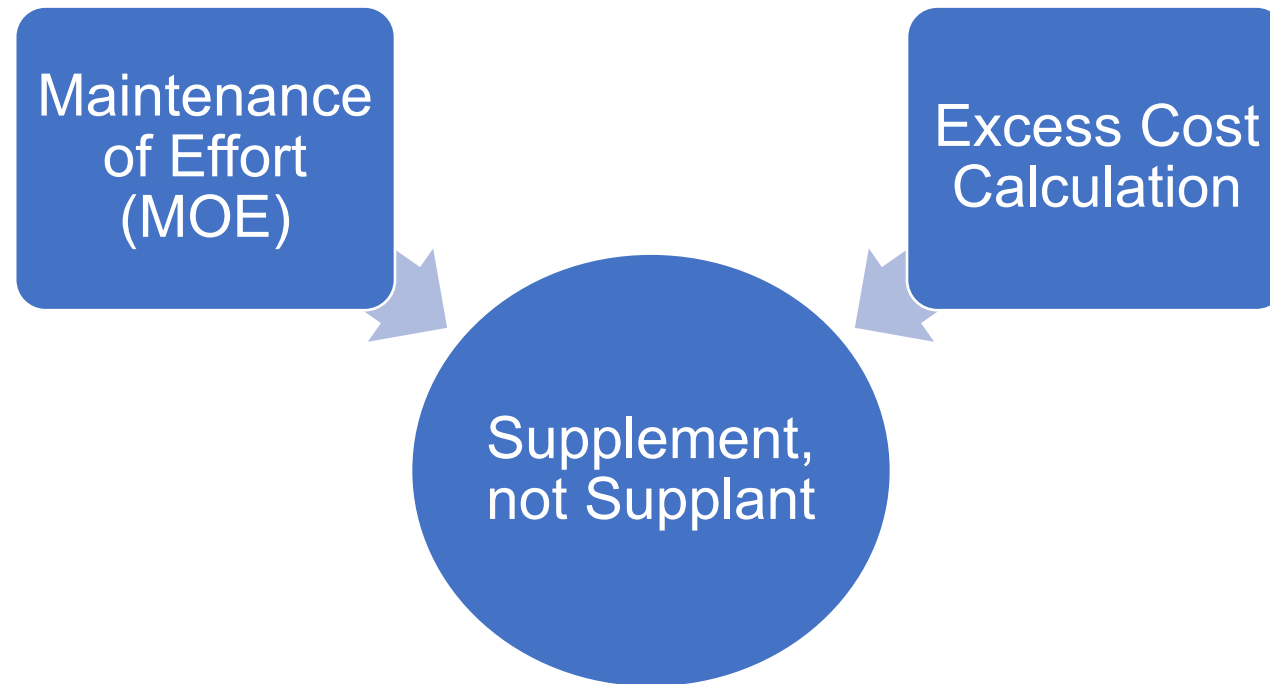
(1) Must be expended in accordance with the applicable provisions of this part;

(2) Must be used only to pay the **excess costs** of providing special education and related services to children with disabilities, consistent with paragraph (b) of this section; and

(3) Must be used to **supplement** State, local, and other Federal funds **and not to supplant** those funds.

Federal Requirement to Supplement, not Supplant Supplanting Tests

Two methods to determine whether a local educational agency (LEA) is meeting the federal requirement:



#2 Be Aware of Last Met Effort

What is Maintenance of Effort (MOE)?

- Federal requirement that an LEA must budget and spend at least the same amount of local or state and local funds as it did the previous year on educating students with disabilities.
- LEA effort = LEA state and/or local expenditures

Purpose of MOE

The LEA MOE requirement helps to ensure that LEAS:

1. Expend at least a certain level of non-federal funds for the education of students with disabilities
2. Continue to expend the funds necessary to provide a free appropriate public education (FAPE)
3. Have sufficient funds to serve students with disabilities
4. Use IDEA Part B, funds to **supplement** state, local, and other federal funds and not to **supplant** those funds

MOE Standards

Required MOE Levels

Eligibility Standard (MOE level for budgeting)

An LEA must **budget** at least the same amount or more as expended in the comparison year.

Compliance Standard (MOE level for spending)

An LEA must **expend** at least the same amount or more as expended in the comparison year.

NOTE:

The **comparison year** refers to the fiscal year that an LEA uses to determine the amount of funds it must budget or expend to meet the MOE standards (the last year the LEA met MOE).

Methods to Meet MOE

An LEA must maintain state and local expenditures for students with disabilities in **one** of four methods:

1. local funds only;
2. the combination of state and local funds;
3. local funds only on a per pupil basis; or
4. the combination of state and local funds on a per pupil basis.

Methods to Meet MOE

POLL #1: In how many methods must an LEA maintain effort for students with disabilities?

- a. 2
- b. 4
- c. 1



Meeting the Eligibility Standard

PLANNING

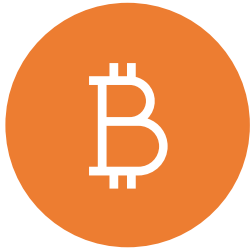
LEA must intentionally
BUDGET
appropriate state
and local
expenditures.



IMPLEMENTATION

LEA must follow
through with planned
expenditure amounts
to maintain effort.

Meeting the Eligibility Standard



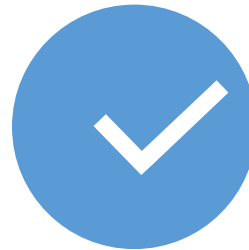
The Eligibility standard is assessed **annually** at the time of budget submission.



The Eligibility standard is assessed by reviewing the MOE Eligibility Worksheet.



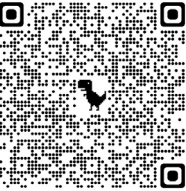
The MOE Eligibility Worksheet compares three years of overall expenditures and per pupil expenditures.



LEA must upload a **completed** MOE Eligibility Worksheet as an attachment in the Consolidated Application (Con App)

Fiscal Year (FY) 24 MOE Eligibility Worksheet

Final Projections Tab



Maintenance of Effort Eligibility Standard

School Year	State and Local Amount	MOE Result	State and Local Per Pupil	MOE Result	Local Amount	MOE Result	Local Per Pupil	MOE Result	Students with Disabilities Enrollment
Comparison Year (Last Met Effort)		NA		NA		NA		NA	NA
2022-2023 Expenditures	\$ -	Met	\$ -	Met	\$ -	Met	\$ -	Met	1
2023-2024 Projected Expenditures	\$ -	Met	\$ -	Met	\$ -	Met	\$ -	Met	1

Directions: Only enter data into WHITE cells. Use MOE portal information to find amounts for the comparison year. In the portal it is referred to as "Projected Effort". Use October FTE-1 SWD CHILD FIND Counts to complete enrollment information. For FY24, you may use projection or 23-1 FTE count. Complete the calculation worksheet tab to determine FY23 and FY24 amounts. Per Pupil Amounts are automatically entered when enrollment information is entered. Finally, to calculate Local MOE, please see instructions in Calculation Worksheet Tab. You must meet in at least one method category each year to be compliant and eligible. If you do not meet, you will need to request exceptions and adjustments.

FY24 MOE Eligibility Worksheet

Final Projections Tab

Maintenance of Effort Eligibility Standard									
School Year	State and Local Amount	MOE Result	State and Local Per Pupil	MOE Result	Local Amount	MOE Result	Local Per Pupil	MOE Result	Students with Disabilities Enrollment
Comparison Year (Last Met Effort)		NA		NA		NA		NA	NA
2022-2023 Expenditures	\$ -	Met	\$ -	Met	\$ -	Met	\$ -	Met	1
2023-2024 Projected Expenditures	\$ -	Met	\$ -	Met	\$ -	Met	\$ -	Met	1

Directions: Only enter data into WHITE cells. Use MOE portal information to find amounts for the comparison year. In the portal it is referred to as "Projected Effort". Use October FTE-1 SWD CHILD FIND Counts to complete enrollment information. For FY24, you may use projection or 23-1 FTE count. Complete the calculation worksheet tab to determine FY23 and FY24 amounts. Per Pupil Amounts are automatically entered when enrollment information is entered. Finally, to calculate Local MOE, please see instructions in Calculation Worksheet Tab. You must meet in at least one method category each year to be compliant and eligible. If you do not meet, you will need to request exceptions and adjustments.



FY24 MOE Eligibility Worksheet

Final Projections Tab

Maintenance of Effort Eligibility Standard									
School Year	State and Local Amount	MOE Result	State and Local Per Pupil	MOE Result	Local Amount	MOE Result	Local Per Pupil	MOE Result	Students with Disabilities Enrollment
Comparison Year (Last Met Effort)		NA		NA		NA		NA	NA
2022-2023 Expenditures	\$ -	Met	\$ -	Met	\$ -	Met	\$ -	Met	1
2023-2024 Projected Expenditures	\$ -	Met	\$ -	Met	\$ -	Met	\$ -	Met	1
<p>Directions: Only enter data into WHITE cells. Use MOE portal information to find amounts for the comparison year. In the portal it is referred to as "Projected Effort". Use October FTE-1 SWD CHILD FIND Counts to complete enrollment information. For FY24, you may use projection or 23-1 FTE count. Complete the calculation worksheet tab to determine FY23 and FY24 amounts. Per Pupil Amounts are automatically entered when enrollment information is entered. Finally, to calculate Local MOE, please see instructions in Calculation Worksheet Tab. You must meet in at least one method category each year to be compliant and eligible. If you do not meet, you will need to request exceptions and adjustments.</p>									



FY24 MOE Eligibility Worksheet

Final Projections Tab

Maintenance of Effort Eligibility Standard									
School Year	State and Local Amount	MOE Result	State and Local Per Pupil	MOE Result	Local Amount	MOE Result	Local Per Pupil	MOE Result	Students with Disabilities Enrollment
Comparison Year (Last Met Effort)		NA		NA		NA		NA	NA
2022-2023 Expenditures	\$ -	Met	\$ -	Met	\$ -	Met	\$ -	Met	1
2023-2024 Projected Expenditures	\$ -	Met	\$ -	Met	\$ -	Met	\$ -	Met	1
<p>Directions: Only enter data into WHITE cells. Use MOE portal information to find amounts for the comparison year. In the portal it is referred to as "Projected Effort". Use October FTE-1 SWD CHILD FIND Counts to complete enrollment information. For FY24, you may use projection or 23-1 FTE count. Complete the calculation worksheet tab to determine FY23 and FY24 amounts. Per Pupil Amounts are automatically entered when enrollment information is entered. Finally, to calculate Local MOE, please see instructions in Calculation Worksheet Tab. You must meet in at least one method category each year to be compliant and eligible. If you do not meet, you will need to request exceptions and adjustments.</p>									



FY24 MOE Eligibility Worksheet

Calculation Worksheet Tab

Worksheet to Meet the IDEA MOE Calculations			
The Calculation should NOT be altered.			
LEA Function Codes for MOE QBE Categories		FY 2023 State/Local Expenditures	Projected Budget for FY 2024 State/Local Projections
		Variances	
Total State Expenditures:			
Fund	Description (when including local charters in Fund 599 exclude object 594)		
100, 150 and 599			
2011	Students w/Disabilities		
2021	Category I		
2031	Category II		
2041	Category III		
2051	Category IV		
2061	Category V		
2081	Non-Instructional Special Education Expenditures		
2310	Tuition for Multi-Handicapped Children		
2620	Preschool Handicapped State Grant		
2810	Rule 10 - Special Education (Support Costs)		
Total State Expenditures Reported		0.00	

Excess of State Expenditures Over State Revenues		0.00	Expenditures coded to State program codes in excess of the State Revenue received.	0.00
Total Local Expenditures:				
Fund 100	Description			
Excess of State Expenditures Over State Revenues (calculated above)		0.00		0.00
2023	Local - Category I			
2033	Local - Category II			
2043	Local - Category III			
2053	Local - Category IV			
2063	Local - Category V			

FY24 MOE Eligibility Worksheet

Calculation Worksheet Tab

Helpful Tips

- Use only the program codes included in the Calculations Worksheet tab
- Note that program code 9990 is not included in the MOE calculation
- Complete both the prior year and current year columns
- Be sure to get enrollment count information
- Make sure all information transfers to Final Projections tab (eligibility worksheet)

Directions for Calculating MOE:

Combine expenditures reported in Fund 100, Fund 150 and Fund 599 only in the following program codes (exclude expenditures charged to Object 594):

2011
2021
2023
2031
2033
2041
2043
2051
2053
2061
2063
2081
2310
2620
2810

The Local expenditures are calculated using the local program codes 2023, 2033, 2043, etc. plus the state expenditures in excess of state revenue.

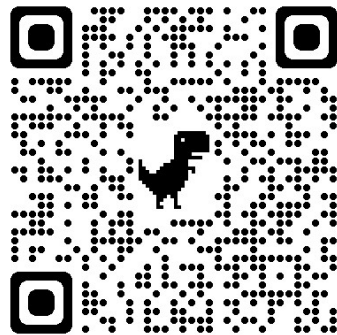
The State Expenditures are calculated by pulling total expenditures recorded on the DE 46 to the following program codes:
2011, 2021, 2031, 2041, 2051, 2061, 2310, 2620, 2081, 2810.

FY24 MOE Eligibility Worksheet

Calculation Worksheet Tab – Comparison Year Amounts


Step 1

Log in to [MyGaDOE Portal](#)



MyGaDOE

Please Log In



Georgia Department of Education
Richard Woods, Georgia's School Superintendent
"Educating Georgia's Future"

Username:

Password:

[I forgot my passphrase!](#)

[Or sign up for an account](#)

This website requires Cookies be enabled in your browser.

Helpful links

- [MyGaDOE Online Guide](#)
- [GaDOE Public Website](#)
- [Information Systems](#)
- [AYP & NCLB](#)
- [Georgia Standards](#)
- [Data Collections](#)
- [Financial Reports](#)
- [Report Card](#)

FY24 MOE Eligibility Worksheet

Calculation Worksheet Tab – Comparison Year Amounts

Step 2

Under Site Navigation,
Select **Consolidated Application** > **Special Education Programs**
> **Special Ed MOE**

The screenshot shows the Georgia Department of Education (GaDOE) website interface. At the top left is the GaDOE logo. To the right is a search bar labeled 'Search Districts' with filters for '0-9', 'A', 'B', and 'C'. Below the search bar is a notification: 'You have (9204) new messages.' The main navigation menu is on the left, with 'Consolidated Application' highlighted in a red box. A dropdown menu is open for 'Consolidated Application', showing 'Special Education Programs' highlighted in a red box. A further dropdown menu is open for 'Special Education Programs', with 'Special Ed MOE' highlighted in a red box. Other menu items include 'Home', 'Logout', 'Exceptional Students', 'SLDS Support', 'Data Collection', 'View Documents', 'GAORS', 'Invoice Application', 'GDOE User Admin', 'Monitoring', 'Message Center', and 'Grants Application'. The 'Surveys' section on the right shows 'New (0)', 'Saved (0)', and 'Submit' buttons, with a message 'No new surveys available'.

FY24 MOE Eligibility Worksheet

Calculation Worksheet Tab – Comparison Year Amounts

Step 3

Select **Fiscal Year 2022** and use the **Projected Effort** amounts for each of the four methods to complete the **Comparison Year** row of the MOE Eligibility Worksheet

Special Education - Maintenance of Effort

Fiscal Year: 2022 District Name: [Dropdown]

Manage MOE: MOE View Attachments

Overall MOE: Met MOE Status Changed by [Dropdown] Apply 50% of Local Effort

State & Local Aggregate After Allowances

For FY ending June 30, 2016	\$17,229,048.30	MOE Status: Met MOE
For FY ending June 30, 2015	\$16,815,736.12	Exception Detail: [Text Area]
FY2 Compared to FY1 - Aggregate After Allowances	\$413,312.18	
<input type="checkbox"/> Correction	[Text Field]	
<input type="checkbox"/> Exception	[Text Field]	
IDEA Amended Effort	[Text Field]	
Projected Effort	\$17,229,048.30	

State & Local Average Per Pupil Expenditure After Allowances

For FY ending June 30, 2016	\$10,397.74	MOE Status: Met MOE
For FY ending June 30, 2014	\$10,324.62	Exception Detail: [Text Area]
FY2 Compared to FY1 - Aggregate After Allowances	\$73.12	
<input type="checkbox"/> Correction	[Text Field]	
<input type="checkbox"/> Exception	[Text Field]	
IDEA Amended Effort	[Text Field]	
Projected Effort	\$10,397.74	

Use | Site Requirements | Feedback

Copyright © 2005-2009 Georgia Department of Education

FY24 MOE Eligibility Worksheet

Calculation Worksheet Tab – Comparison Year Amounts



Special Education - Maintenance of Effort

Fiscal Year: 2022 District Name: [Dropdown]

Manage MOE: MOE View Attachments Save Print

Overall MOE: Met MOE Status Changed by [Dropdown] Apply 50% of Local Effort

State & Local Aggregate-After Allowances

For FY ending June 30, 2016: \$17,229,048.30 MOE Status: Met MOE

For FY ending June 30, 2015: \$16,815,736.12 Exception Detail: [Text Area]

FY2 Compared to FY1- Aggregate After Allowances: \$413,312.18

Correction

Exception

IDEA Amended Effort: [Text Area]

Projected Effort: 7,229,048.30

State & Local Average Per Pupil Expenditure-After Allowances

For FY ending June 30, 2016: \$10,397.74 MOE Status: Met MOE

For FY ending June 30, 2014: \$10,324.62 Exception Detail: [Text Area]

FY2 Compared to FY1- Aggregate After Allowances: \$73.12

Correction

Exception

IDEA Amended Effort: [Text Area]

Projected Effort: \$10,397.74

Use | Site Requirements | Feedback Copyright © 2005-2009 Georgia Department of Education

Maintenance of Effort Eligibility Standard									
School Year	State and Local Amount	MOE Result	State and Local Per Pupil	MOE Result	Local Amount	MOE Result	Local Per Pupil	MOE Result	Students with Disabilities Enrollment
Comparison Year (Last Met Effort)		NA		NA		NA		NA	NA
2021-2022 Expenditures	\$ -	Met	\$ -	Met	\$ -	Met	\$ -	Met	1
2022-2023 Projected Expenditures	\$ -	Met	\$ -	Met	\$ -	Met	\$ -	Met	1

Directions: Only enter data into WHITE cells. Use MOE portal information to find amounts for the comparison year. In the portal it is referred to as "Projected Effort". Use October FTE-1 SWD CHILD FIND Counts to complete enrollment information. For FY23, you may use projection or 22-1 FTE count. Complete the calculation worksheet tab to determine FY22 and FY23 amounts. Per Pupil Amounts are automatically entered when enrollment information is entered. Finally, to calculate Local MOE, please see instructions in Calculation Worksheet Tab. You must meet in at least one method category each year to be compliant and eligible. If you do not meet, you will need to request exceptions and adjustments.

Meeting the Eligibility Standard

Important Reminders

For IDEA budget approval, the **MOE Eligibility Worksheet** must be:

- Uploaded to the Con App
 - IDEA 611 grant's Uploaded Files tab OR general Attachments tab
- Completed (both worksheet tabs)
 - Correct comparison year amounts
 - Students with disabilities enrollment information

AND

The MOE Eligibility Worksheet must show that the LEA projects meeting in at least one method each year.

FY24 MOE Eligibility Worksheet

Final Projections Tab Example

Let's Put It to a Vote: Is the LEA eligible to receive budget approval? **No**

Maintenance of Effort Eligibility Standard									
School Year	State and Local Amount	MOE Result	State and Local Per Pupil	MOE Result	Local Amount	MOE Result	Local Per Pupil	MOE Result	Students with Disabilities Enrollment
Comparison Year (Last Met Effort)	\$ 37,959,315.97	NA	\$ 9,823.25	NA	\$ 11,328,755.67	NA	\$ 3,285.13	NA	NA
2022-2023 Expenditures	\$ 39,059,782.34	Met	\$ 9,735.74	Did Not Meet	\$ 10,977,620.34	Did Not Meet	\$ 2,736.20	Did Not Meet	4012
2023-2024 Projected Expenditures	\$ 39,045,175.00	Did Not Meet	\$ 9,732.10	Did Not Meet	\$ 10,377,571.00	Did Not Meet	\$ 2,586.63	Did Not Meet	4012

Directions: Only enter data into WHITE cells. Use MOE portal information to find amounts for the comparison year. In the portal it is referred to as "Projected Effort". Use October FTE-1 SWD CHILD FIND Counts to complete enrollment information. For FY24, you may use projection or 23-1 FTE count. Complete the calculation worksheet tab to determine FY23 and FY24 amounts. Per Pupil Amounts are automatically entered when enrollment information is entered. Finally, to calculate Local MOE, please see instructions in Calculation Worksheet Tab. You must meet in at least one method category each year to be compliant and eligible. If you do not meet, you will need to request exceptions and adjustments.



Meeting the Compliance Standard

Financial Review runs the Compliance Test after the DE046 submission deadline.



LEAs have four options to demonstrate meeting the MOE requirement:

Local funds only	State and Local funds	Local per pupil	State and Local per pupil
------------------	-----------------------	-----------------	---------------------------

Compliance (Expenditures) Standard

Two Scenarios

POLL #2: In which scenario did the LEA meet the compliance standard? How come the LEA did not meet the compliance standard in the other scenario?



A.

The LEA expended \$900,000 and met LEA MOE in FY19. In FY20, it expended \$950,000.

B.

The LEA expended \$900,000 and met LEA MOE in FY19. In FY20, it expended \$850,000.

Compliance (Expenditures) Standard

Two Scenarios

POLL #2: In which scenario did the LEA meet the compliance standard? How come the LEA did not meet the compliance standard in the other scenario?

The LEA did not maintain effort and expended \$50,000 less than it did in FY19.

A.

The LEA expended \$900,000 and met LEA MOE in FY19. In FY20, it expended \$950,000.

B.

The LEA expended \$900,000 and met LEA MOE in FY19. In FY20, it expended \$850,000.

Subsequent Years Rule

34 CFR § 203(c)(1) Subsequent Years

“...the level of expenditures required of the LEA for the fiscal year subsequent to the year of the failure is the amount that would have been required in the absence of that failure, not the LEA’s reduced level of expenditures.”

WHAT DOES THAT MEAN?

In what year did you last meet
in each method?

Applying the Subsequent Years Rule

Fiscal Year	Required Level of Effort (\$)	Actual Level of Effort (\$)	Met MOE?
2018	\$100	\$100	YES

Applying the Subsequent Years Rule

Fiscal Year	Required Level of Effort (\$)	Actual Level of Effort (\$)	Met MOE?
2018	\$100	\$100	YES
2019	\$100	\$90	NO
2020	\$100	\$90	NO
2021	\$100	\$110	YES
2022	\$110		

Applying the Subsequent Years Rule Across Methods



POLL #3: Looking at FY21, did the LEA meet MOE compliance? **Yes**

Fiscal Year	Local Only Aggregate	State and Local Aggregate	Local Only Per Pupil	State and Local Per Pupil	Child Count
2020	\$10,500	\$21,000	\$1,050	\$2,100	10
2021	\$10,400	\$21,600	\$1,300	\$2,700	8
2022	\$8,900	\$21,000	\$890	\$2,100	10

Applying the Subsequent Years Rule Across Methods



POLL #4: In which method(s) did the LEA meet in FY21?

Fiscal Year	Local Only Aggregate	State and Local Aggregate	Local Only Per Pupil	State and Local Per Pupil	Child Count
2020	\$10,500	\$21,000	\$1,050	\$2,100	10
2021	\$10,400	\$21,600	\$1,300	\$2,700	8
2022	\$8,900	\$21,000	\$890	\$2,100	10

Applying the Subsequent Years Rule Across Methods: Eligibility Standard

Maintenance of Effort Eligibility Standard									
School Year	State and Local Amount	MOE Result	State and Local Per Pupil	MOE Result	Local Amount	MOE Result	Local Per Pupil	MOE Result	Students with Disabilities Enrollment
Comparison Year (Last Met Effort)		NA		NA		NA		NA	NA
2022-2023 Expenditures	\$ -	Met	\$ -	Met	\$ -	Met	\$ -	Met	1
2023-2024 Projected Expenditures	\$ -	Met	\$ -	Met	\$ -	Met	\$ -	Met	1

Directions: Only enter data into WHITE cells. Use MOE portal information to find amounts for the comparison year. In the portal it is referred to as "Projected Effort". Use October FTE-1 SWD CHILD FIND Counts to complete enrollment information. For FY24, you may use projection or 23-1 FTE count. Complete the calculation worksheet tab to determine FY23 and FY24 amounts. Per Pupil Amounts are automatically entered when enrollment information is entered. Finally, to calculate Local MOE, please see instructions in Calculation Worksheet Tab. You must meet in at least one method category each year to be compliant and eligible. If you do not meet, you will need to request exceptions and adjustments.



Applying the Subsequent Years Rule Across Methods: Compliance Standard

State & Local Aggregate	
For FY ending June 30,2018	\$9,588,305.08
State and Local Effort	\$8,855,954.13
FY2 Compared to FY1- Aggregate	\$732,350.95
<input type="checkbox"/> Adjustment	
<input type="checkbox"/> Exception	
IDEA Amended Effort	
Projected Effort	\$9,588,305.08

State & Local Aggregate	
For FY ending June 30,2019	\$10,464,526.20
State and Local Effort	\$9,588,305.08
FY2 Compared to FY1- Aggregate	\$876,221.12
<input type="checkbox"/> Adjustment	
<input type="checkbox"/> Exception	
IDEA Amended Effort	
Projected Effort	\$10,464,526.20

MOE: Key Takeaways

- Required level of effort (for either standard) based on the last fiscal year in which LEA MOE compliance was met.
- Must use the same calculation method when comparing the current year to the comparison year.
- If LEA meets LEA MOE by any of the four methods, LEA MOE is met.

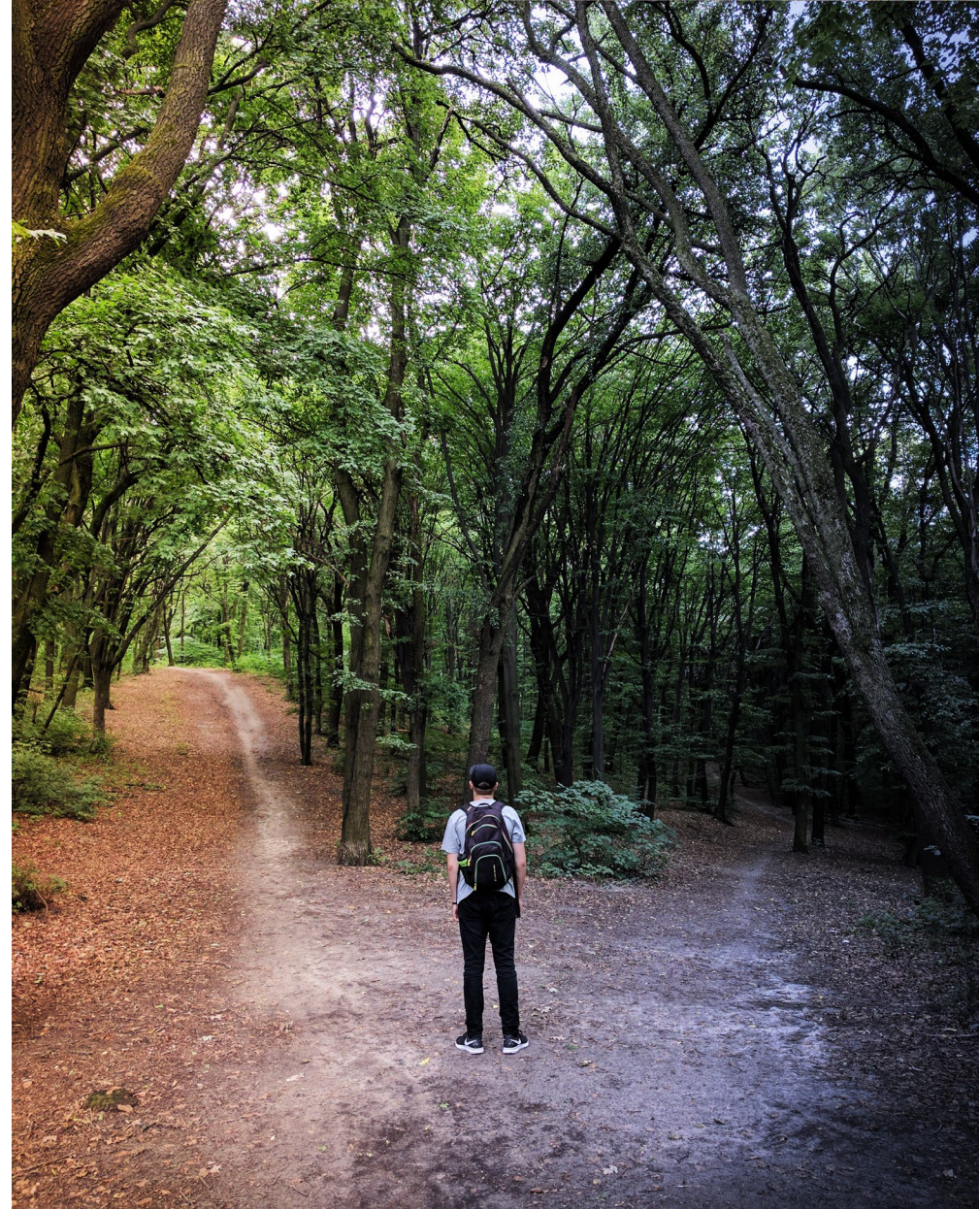
I Didn't Meet. Now WHAT?

The LEA generally has two options, but only one viable one:

Option 1 - Reduce Effort

OR

Option 2 - Repay Funds



#3 Be Ready to Take Exceptions or Adjustments

Basic Understanding of Exceptions

An LEA may:

- Take multiple exceptions in one year if each exception applies in that year
- Apply these exceptions to reduce its required MOE level and meet the **eligibility (budget) standard** using any of the four methods
- Apply these exceptions to reduce its required MOE level and meet the **compliance (expenditures) standard** using any of the four methods

Allowable Exceptions

34 CFR § 300.204

- a. The **voluntary** departure, by retirement or otherwise, or departure for **just cause**, of special education personnel or related services personnel;
- b. A decrease in the enrollment of children with disabilities;
- c. The termination of the LEA's obligation to provide a program of special education to a particular child with a disability that is an **exceptionally costly** program because the child has left the LEA, reached the maximum age, or no longer needs the program);

Allowable Exceptions

34 CFR § 300.204

- d. The termination of **costly expenditures** for long-term purchases (Must have **prior approval**); and/or,
- e. The assumption of the cost by the high cost fund operated by the State.

Exception Example

- A veteran special education teacher paid with state and local funds retired at the end of last school year and is replaced by a less-experienced special education teacher for the current school year.
- The LEA expended \$150,000 in salary and benefits on the veteran teacher last school year and will expend \$90,000 on the new hire in the current school year.
- The LEA may reduce its required level of effort by \$60,000 (\$150,000 – \$90,000) in the current school year.

Calculating Exceptions

State and Local Aggregate

	Amount
MOE Projected Effort (Required Effort)	\$5,000,000
FY24 Projected State and Local Expenditures	\$4,500,000
MOE Shortfall	(\$500,000)
Exceptions	
Decline in enrollment	\$100,000
Voluntary departures	\$400,000
Total Exceptions	\$500,000
Applying Exceptions	
MOE Projected Effort (Required Effort)	\$5,000,000
Total Exceptions	\$500,000
MOE Effort (New Effort after Applying Exceptions)	\$4,500,000



Timeline for Reducing MOE

- LEAs may reduce **MOE eligibility** throughout the year.
- LEAs must reduce **MOE compliance** by **March 14 reconciliation deadline** for current year reductions.

Documentation Requirements

Exceptions

- [Exceptions to MOE Compliance Requirement Form](#) must be submitted and approved.
- Supporting evidence must show true expenditures and must be approved.
- All documentation must be uploaded to the Con App

Georgia Department of Education	Exception to the Maintenance of Effort Compliance Requirement	Division for Special Education Services and Supports
---------------------------------	--	--

Name of District:	Phone:
Name of Person completing the form:	Signature:
E-mail address:	Date:

As part of the IDEA, Part B application approval process, applicants must comply with 34 CFR 300.203, Maintenance of Effort. The U.S. Department of Education determines compliance with this requirement by comparing actual state and local special education expenditures for the most recent fiscal year to actual expenditures made in the preceding fiscal year.

The IDEA 2004 and its fiscal regulation 34 CFR 300.204 Exception to Maintenance of Effort allows for the following exceptions to maintenance of effort:

- The voluntary departure, by retirement or otherwise, or departure for just cause, of special education personnel or related service personnel;
- A decrease in the enrollment of children with disabilities;
- The termination of the obligation of an LEA, consistent with this part, to provide a program of special education to a particular child with a disability that is an exceptionally costly program, as determined by the state educational agency, because the child –
 - has left the jurisdiction of the LEA;
 - has reached the age at which the obligation of the LEA to provide a free appropriate public education to the child has terminated;
 - no longer needs such program of special education;
- The termination of costly expenditures for long-term purchases, such as the acquisition of equipment or construction of school facilities;
- The assumption of cost by the high cost fund operated by the SEA under §300.704(c).

NOTE: When determining maintenance of effort, the Georgia Department of Education checks the amount of state and local special education expenditures and then the per pupil amount. Compliance MOE expenditure reports for the current year are compared to the last year's maintained effort expenditures (in each of the four methods). The district can use the above allowable exceptions to reduce the MOE amount. If a district is required to pay back funds, non-federal funds must be used.

MOE Adjustment

34 CFR § 300.205

- If the IDEA 611 allocation **increases**, the LEA, if it meets certain conditions, may **reduce** its MOE level up to 50 percent of the increase in the allocation.
- Conditions
 - Providing FAPE
 - Has not been identified with a Significant Disproportionality

Documentation Requirements

MOE Adjustment

- [MOE Adjustment Form](#) must be submitted and approved.
- LEA is responsible for maintaining **all** documentation.
- All documentation must be uploaded to the Con App.

Use of IDEA Funds to Adjust Local Fiscal Effort in Certain Years (34 CFR § 300.205 Maintenance of Effort (MOE))

IDEA 2004 allows an LEA to treat up to 50% of the **increase only** in IDEA funds from the previous year to reduce local MOE expenditures. If an LEA decides to use these funds, it must use the form below to calculate the maximum available to be used.

NOTE: The LEA must use an amount of local funds equal to the reduction in expenditures to carry out activities that could be supported with funds under ESEA regardless of whether the LEA is using funds under ESEA for those activities. However, if the LEA is unable to establish and maintain programs of FAPE or the state performance targets are at issue than GaDOE shall prohibit this reduction. The amount of funds used in Early Intervening Services shall count toward the maximum amount of expenditures that the LEA may reduce their local fiscal effort (see Maintenance of Effort and Early Intervening Services in Appendix D of the federal regulations). *

1. Initial IDEA 611 allocation for current year:	\$ _____
2. Initial IDEA 611 allocation for previous year:	\$ _____
3. Difference (line 1 – line 2) if >0:	\$ _____
4. Line 3 X 50%:	_____ X .50
4a. Maximum 50% reduction of local MOE	\$ _____
5. Maximum available for use in CCEIS:	\$ _____*
*If disproportionate, LEA is required to use 15% maximum for CCEIS of IDEA 611 and Preschool 619 funds	
6. Amount committed to Optional CEIS	\$ _____
7. Difference of Optional CEIS and Maximum CCEIS (Line 5 – Line 6) that could be used for local MOE reduction	\$ _____

Narrative on the use of these funds in an ESEA related activity is required.

Regular education operation of schools in ESEA approved activities for the same amount.
Must track these expenditures to ensure full 50% reduction of local MOE.

#4 Be on Top of Expenditures



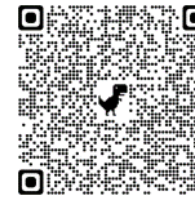
**There Should Be
NO Surprises!**

Best Practices

- ✓ Work **closely** with finance personnel
- ✓ Establish adequate procedures to review the budget and consistently review special education expenditures
- ✓ Accurately project expenditures based on activities/changes
- ✓ Identify and take early exceptions

Resources

Special Education Budget Webpage



Budget, Grants and Consolidated Application

FY 2023 Allocations

- FY 2022 Final Allocations
- FY 2021 Final Allocations
- Indirect Costs Calculator
- Budget Pages
- IDEA Allowable Expenditures

FY 2023 Consolidated Application

- IDEA Budget Submission Checklist
- Forms
- Proportionate Share Calculation Worksheet
- CCEIS Calculation Worksheet for Original Allocation and ARP Funds

Maintenance of Effort

- FY23 MOE Eligibility Worksheet
- Exceptions to MOE Compliance Requirement Form
- MOE Adjustment Form
- New Charter MOE Requirement Form



Questions?

Contact Us

We're Here to Help!

Nicole Croom

Program Specialist

678.850.1171

ncroom@doe.k12.ga.us

Stephanie Hurst

Program Specialist

stephanie.hurst@doe.k12.ga.us

Andrew Britt

Program Specialist

404.275.6394

andrew.britt@doe.k12.ga.us

Carla Rose

Program Specialist

404.673.3473

carla.rose@doe.k12.ga.us

www.gadoe.org

   @georgiadeptofed

 youtube.com/user/GaDOEmedia



**EDUCATING
GEORGIA'S FUTURE**

