

Director's Webinar
November 18, 2014

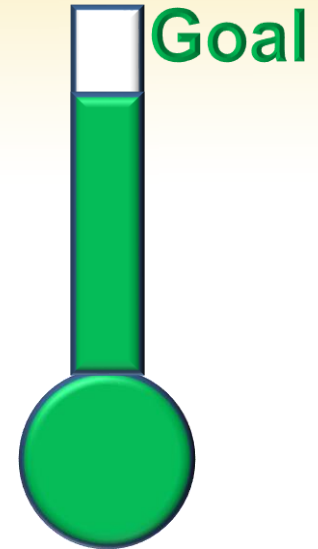
2:00 PM



Dr. John D. Barge, State School Superintendent
"Making Education Work for All Georgians"
www.gadoe.org

Budgets and Grants

- **76% of districts have an approved budget!!**
- Gentle Reminder: The budget submission due date was September 30th. Please submit your initial budget or complete your revisions as soon as possible.



Dr. John D. Barge, State School Superintendent
"Making Education Work for All Georgians"
www.gadoe.org

Transition Survey Dates 2014-2015	
November 18, 2014	<ul style="list-style-type: none"> Transition Planning Opens for Data Entry-Names for Transaction Plan verification will be available on the portal (See directions on the portal).
December 19, 2014	<ul style="list-style-type: none"> Transition Planning Deadline for Submission-Deadline for this verification.
January 23, 2015	<ul style="list-style-type: none"> Deadline for Uploading Individual Student Transition Plan Documents
February 10, 2015	<ul style="list-style-type: none"> Uploading Individual Student Transition Plan for Correction of Compliance Begins
February 20, 2015	<ul style="list-style-type: none"> Deadline for Uploading Individual Student Transition Plan for Correction of Non-compliance-Correction for non-compliance completed.





Site Navigation

[Home](#)
[Logout](#)

Exceptional Students

[SE Applications Dashboard](#)

Kathelle White

[Account Information](#)[Add to Favorites](#)[Help - Docket](#)

Hide Navigation

Administrative Dashboard for Special Education Applications

School Year:

2015

[Export To Excel](#)

System ID	System Name	Post Secondary	SE Timelines	SE PreSchool	SE Continuation of Services	SE PS Transtion
601	Appling County	Not Yet Available	Available for Data Collection	Available for Data Collection	Not Yet Available	Not Yet Available
602	Atkinson County	Not Yet Available	Available for Data Collection	Available for Data Collection	Not Yet Available	Not Yet Available
7830410	Atlanta Heights Charter School	Not Yet Available	Available for Data Collection	Available for Data Collection	Not Yet Available	Not Yet Available
761	Atlanta Public Schools	Not Yet Available	Submitted	Available for Data Collection	Not Yet Available	Not Yet Available
762	Audit System	Not Yet Available	Available for Data Collection	Available for Data Collection	Not Yet Available	Not Yet Available
603	Bacon County	Not Yet Available	Available for Data Collection	Available for Data Collection	Not Yet Available	Not Yet Available
604	Baker County	Not Yet Available	Submitted	Available for Data Collection	Not Yet Available	Not Yet Available
605	Baldwin County	Not Yet Available	Available for Data Collection	Available for Data Collection	Not Yet Available	Not Yet Available
606	Banks County	Not Yet Available	Available for Data Collection	Available for Data Collection	Not Yet Available	Not Yet Available
607	Barrow County	Not Yet Available	Available for Data Collection	Available for Data Collection	Not Yet Available	Not Yet Available
608	Bartow County	Not Yet Available	Available for Data Collection	Available for Data Collection	Not Yet Available	Not Yet Available
609	Ben Hill County	Not Yet Available	Available for Data Collection	Available for Data Collection	Not Yet Available	Not Yet Available
610	Berrien County	Not Yet Available	Available for Data Collection	Available for Data Collection	Not Yet Available	Not Yet Available
611	Bibb County	Not Yet Available	Submitted	Available for Data Collection	Not Yet Available	Not Yet Available



Dr. John D. Barge, State School Superintendent

"Making Education Work for All Georgians"

www.gadoe.org

SE Applications Dashboard - Windows Internet Explorer

https://portal.doe.k12.ga.us/SEApplicationsDB.aspx?oid=46041

Search Districts 0-9 A B C D E F G H I J K L M N O P Q R S T U V W X Y Z

You have 1(0) new messages.

Welcome to MyGaDOE
[Help - Dtticket](#) | [Online Documentation](#)

Special Education Applications Dashboard

School Year: 2015
 District: Appling County

Application Name	Application Status	Start Date	Close Date	Submitted By	Submitted On
SE Timelines	Available for Data Collection	8/1/2014 12:00:00 AM	7/31/2015 12:00:00 AM		
SE Pre School	Available for Data Collection	8/1/2014 12:00:00 AM	7/31/2015 12:00:00 AM		
Post Secondary	Not Yet Available				
SE Continuation of Services	Not Yet Available				
SE PS Transition	Not Yet Available				

Privacy Policy | Terms of Use | Site Requirements | Feedback

Copyright © 2005-2009 Georgia Department of Education



Dr. John D. Barge, State School Superintendent
"Making Education Work for All Georgians"
www.gadoe.org

Georgia Instructional Material Project GIMC

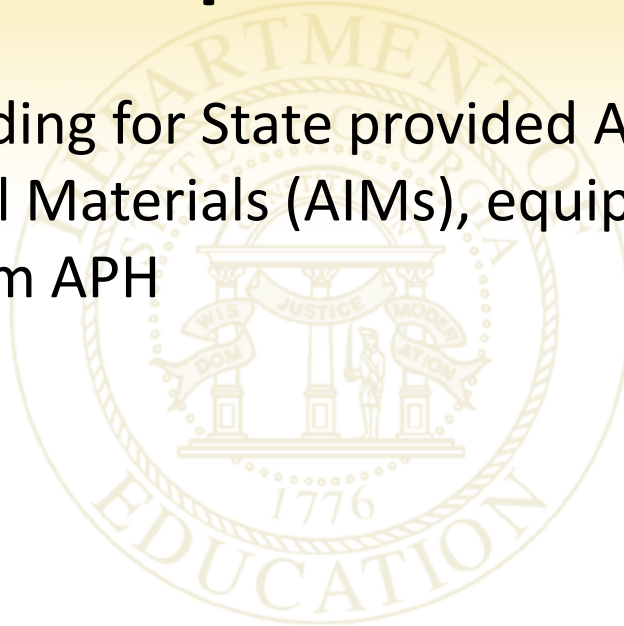
American Printing House (APH) for the Blind
Annual Registration



Dr. John D. Barge, State School Superintendent
"Making Education Work for All Georgians"
www.gadoe.org

Importance:

Secures funding for State provided Accessible Instructional Materials (AIMs), equipment and supplies from APH



Dr. John D. Barge, State School Superintendent
"Making Education Work for All Georgians"
www.gadoe.org

Things to do

Ensure that all students who are blind (primary or secondary area of disability) have a current vision report (within 3 years of 1/5/15) i.e., Reports must have a date after 1/5/2012.



Dr. John D. Barge, State School Superintendent
"Making Education Work for All Georgians"
www.gadoe.org

Repercussions

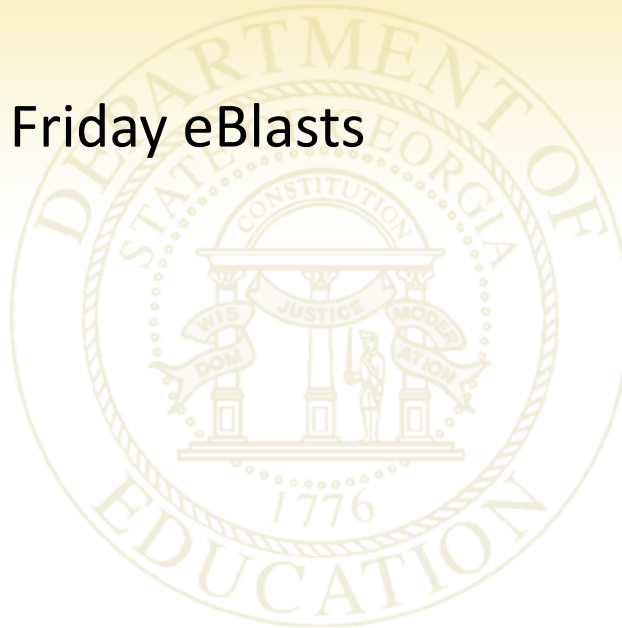
Districts will be responsible for providing APH required equipment and supplies from local funds for blind students who are not eligible for APH funds due to an expired vision report.

Print materials will still be available at no cost to the districts.



Further Information

Following in Friday eBlasts



Dr. John D. Barge, State School Superintendent
"Making Education Work for All Georgians"
www.gadoe.org

Text-to-Speech Assessment Question



- Is there an electronic reader or a text-to-speech program(s) recommended by DOE for students to use during the school year if they have read to accommodations?

Image courtesy of Michelle Meiklejohn at FreeDigitalPhotos.net



Dr. John D. Barge, State School Superintendent
"Making Education Work for All Georgians"
www.gadoe.org

Text-to-Speech Definition



Image courtesy of David Castillo at FreeDigitalPhotos.net

- Text-to-speech refers to electronic text being read aloud by a computer generated voice. It also allows for viewing of the print text.
- Text-to-speech might also be called TTS or electronic reader



Dr. John D. Barge, State School Superintendent
"Making Education Work for All Georgians"
www.gadoe.org

Answer to the Question



There is not any text-to-speech program that is being recommended from the state level. It is up to the student's IEP team to decide what would be the best tool (TTS program) to meet the needs of the student.

Resources to Help IEP Teams: Text-to-Speech Options



- [Using Text-to-Speech Technology Resource Guide from the Center for Applied Special Technology \(CAST\)](#)
- [Screen Readers & Text-to-Speech Applications \(CAST\)](#)
- [Software for Digital Talking Books \(DTBs\)](#)

Resources to Help IEP Teams: Text-to-Speech Options

- [13 Great Free Text-to-Speech Tools](#) (Educational Technology and Mobile Learning)
- [The Best Text to Speech \(TTS\) Software Programs and Online Tools](#) (How-to Geek)



<http://www.gpat.org/Georgia-Project-for-Assistive-Technology/Pages/Easy-Reader-Software.aspx>

Dolphin EasyReader Software

EasyReader is an accessible software ebook reader with a simple user interface, which can read a variety of electronic formats including DAISY. EasyReader's simple interface allows it to be used with minimal training for daily classroom work, leisure reading or testing purposes.

EasyReader can be used by students with blindness, low vision, dyslexia or print disabilities and is available **free** of charge to your district under a state license to the following Georgia students:

- Students registered with Georgia Instructional Materials Center (GIMC)
 - Certified or Noncertified (NO Physician statement needed)
- Students with an IEP documenting a print disability

Educators

If you have a student who struggles with reading and needs the accessibility of electronic text, EasyReader may be a solution. View the [QUICK VIDEO TUTORIAL](#), [GIMC Process](#), to learn how to obtain EasyReader and/or other materials from GIMC.

Registered Users (Patrons)

If you are registering a student with GIMC and requesting EasyReader and/or other materials, view the [QUICK VIDEO TUTORIALS](#), [Registering a Student](#) and [Requesting Materials](#) as a refresher. Then follow this link to the [GIMC Student Registration](#).

Software Download and Installation

Once GIMC receives a request for EasyReader, a software authorization code will be sent from GIMC. Follow the steps in the [Downloading the Software](#) and [Installing the Software](#) **QUICK VIDEO TUTORIALS**.

Contact Information

Gina Gelinis

Program Manager

Phone: (404) 463-5288

Fax: (404) 651-6457

Email: ggelinis@doe.k12.ga.us

Quick Video Tutorials

[GIMC Process](#)

[Registering a Student](#)

[Requesting Materials](#)

[Downloading the Software](#)

[Installing the Software](#)

Resources

[GIMC Student Registration](#)

[National Center on AIMS Video Tutorials](#)

[Tips and Tricks](#)

Assistive Technology *Feature Matching*: An Essential Step

Assistive technology features should be matched, as thoroughly as possible, to student needs and tasks. Teams will often find that there are several possible AT solutions that may be appropriate. Careful review of the specific features of devices or programs typically narrows the choices and makes the appropriate solution more obvious.

Pick the features, not the product!



Dr. John D. Barge, State School Superintendent
"Making Education Work for All Georgians"
www.gadoe.org

Text-to-Speech Feature Matching: Resources



- [Feature Match Checklists](#)
Scott Marfilius & Kelly
Fonner
- [Sorting through Features:
Using Accessible
Instructional Materials In the
Classroom](#) Scott Marfilius &
Kelly Fonner



Dr. John D. Barge, State School Superintendent
"Making Education Work for All Georgians"
www.gadoe.org

Feature Match Checklists

Features of Electronic Reader Software

Reading Features – Visual Presentation

- Page Presentation
 - One page at a time
 - Multiple page view
 - Exact image view
 - Extracted text view
- Highlight as Read
 - By sentence
 - By line
 - By paragraph
 - By word
- Color
 - Text
 - Background
 - Highlight
 - Selection
 - Homonyms
- Size Adjustability
 - Of image
 - Of text
 - Magnification (enlargement as read)
- Masking Text (by line, paragraph, sentence)

Reading Features – Auditory Presentation

- Synthetic Voice
 - Synthesizer Language
 - Tonality/Pitch Adjustments
- Digitized Audio Voice
 - Recording capacity
 - Voice notes
- Unit read
 - By sentence
 - By line
 - By phrase
 - By paragraph
 - By word
 - By highlight
 - By heading
- Reading Controls
 - Speed
 - Pacing
 - Pausing
- Speech Access/Screen Reading
 - Talking menus
 - Talking dialog boxes



Dr. John D. Barge, State School Superintendent

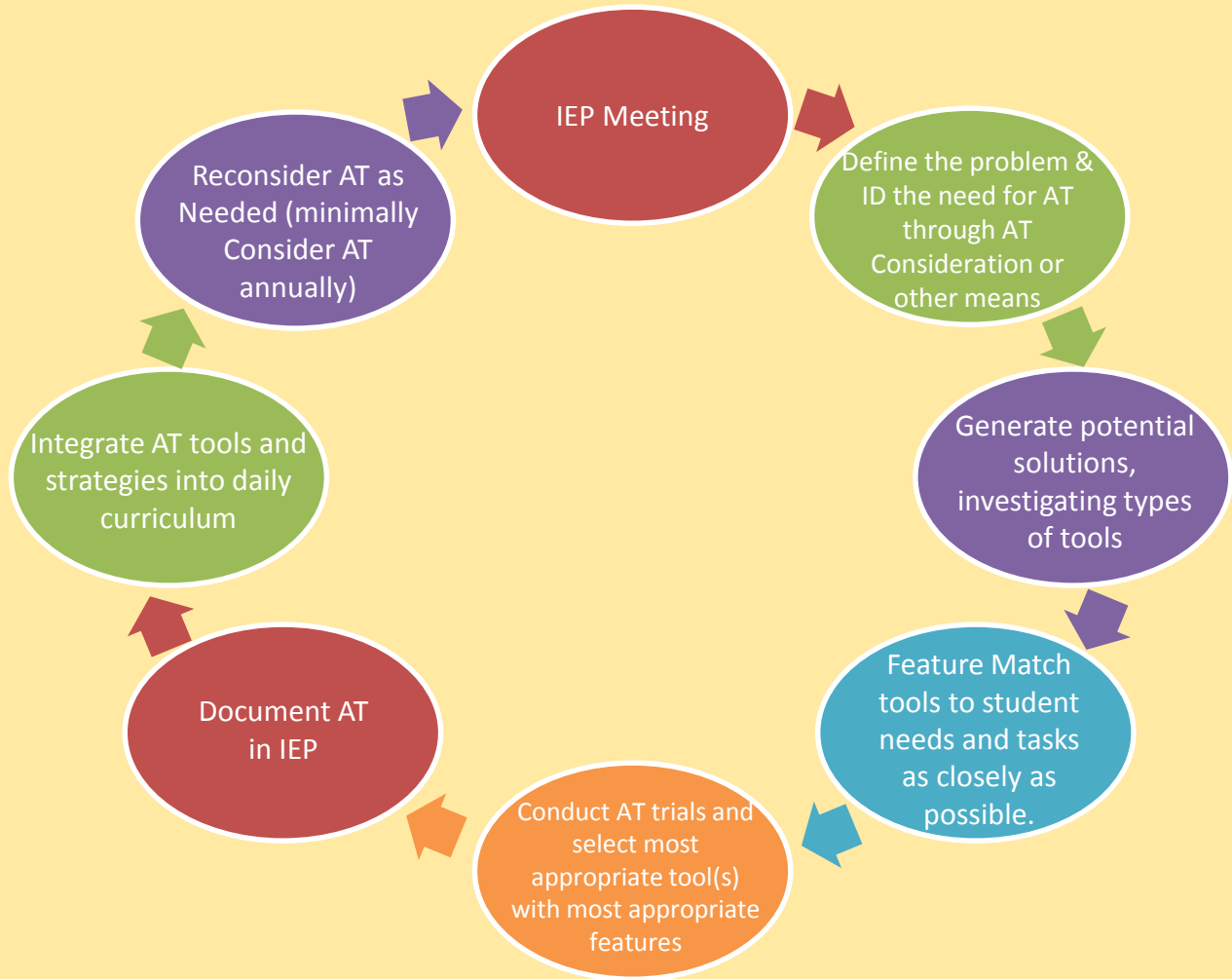
"Making Education Work for All Georgians"

www.gadoe.org

AT Decisions: The Process



- Student Needs & instruction drive assistive technology decisions
- Statewide assessment accommodations should be selected based on the student's individual needs and should generally be consistent with the accommodations provided during instruction.



Decision Making Resource: Accommodations

- [Protocol for Accommodations in Reading \(PAR\)](#)
 - uPAR (online)
 - PAR (Print Version)

Helps determine most suitable reading accommodations for specific students by assessing their individual needs.



Additional Information

- Gina Gelinas
 - ggelinas@doe.k12.ga.us
- Carson Cochran
 - ccoehran@doe.k12.ga.us



Dr. John D. Barge, State School Superintendent
"Making Education Work for All Georgians"
www.gadoe.org